

Travel Planner for Timo

Table of Contents

CALENDAR

Day 1 - 2 November 2010

- Auckland
 - Transport options from *Auckland*
 - Orewa
 - Orewa beach Top 10 Holiday Park
 - Long Bay - Okura Marine Reserve, North Auckland

◦ Day 2 - 3 November 2010

- Transport options from *Orewa*
- Dargaville
 - Waipoua Kauri Forest
 - Kauri Coast Top10 Holiday Park

◦ Day 3 - 4 November 2010

- Transport options from *Dargaville*
- Paihia
 - The Bay of Islands
 - Beachside Holiday Park
 - Kawiti Caves (Waiomio Caves)

◦ Day 4 - 5 November 2010

- Transport options from *Paihia*
- Cape Reinga
 - Transport options from *Cape Reinga*
 - Kaitaia
 - Whatuwhiwhi Top 10 Holiday Park
 - Ninety Mile Beach

■ Day 5 - 6 November 2010

- Transport options from *Kaitaia*
- Kohukohu
 - Wairere Boulders
- Transport options from *Kohukohu*
- Okaihau
 - Wairere Boulders
- Transport options from *Okaihau*
- Tutukaka Coast
 - Dive! Tutukaka
- Transport options from *Tutukaka Coast*
- Whangarei
 - Poor Knights Islands

■ Day 6 - 7 November 2010

- Transport options from *Whangarei*
- Tutukaka Coast
 - Dive! Tutukaka
 - Tutukaka Coast

■ Day 7 - 8 November 2010

- Dive! Tutukaka
- Day 8 - 9 November 2010
 - Transport options from *Tutukaka Coast*
 - Helensville
 - Muriwai Gannet Colony
 - Transport options from *Helensville*
 - Auckland
 - Transport options from *Auckland*
 - Orewa
 - Orewa beach Top 10 Holiday Park
- Day 9 - 10 November 2010
 - Transport options from *Orewa*
 - Waitomo Caves
 - Transport options from *Waitomo Caves*
 - Matamata
 - Matamata - Home of Hobbiton
 - Transport options from *Matamata*
 - Rotorua
 - Waimangu Volcanic Valley
 - Mount Tarawera
 - Kiwi Encounter
 - Tamaki Maori village
 - Whakarewarewa Forest
 - Rotorua TOP 10 Holiday Park
 - Day 10 - 11 November 2010
 - Transport options from *Rotorua*
 - Whakatane
 - White Island Tours Ltd
 - Ohope Beach Top 10 Holiday Park
 - Day 11 - 12 November 2010
 - Transport options from *Whakatane*
 - Taupo
 - Huka Falls
 - Lake Taupo
 - Craters of the Moon
 - Transport options from *Taupo*
 - Ohakune
 - Transport options from *Ohakune*
 - Whakapapa Village
 - Tongariro National Park
 - Whakapapa Holiday Park
 - Day 12 - 13 November 2010
 - Transport options from *Whakapapa Village*
 - Upper Hutt
 - Kaitoke Regional Park
 - Transport options from *Upper Hutt*
 - Wellington
 - Te Papa Tours
 - Capital Gateway Motor Inn
 - Red Rocks Reserve
 - Mount Victoria

- Day 13 - 14 November 2010
 - Transport options from *Wellington*
 - Picton
 - Marlborough Sounds
 - Picton Top 10 Holiday Park
- Day 14 - 15 November 2010
 - Transport options from *Picton*
 - Blenheim
 - Blenheim Dive Centre
- Day 15 - 16 November 2010
 - Blenheim Dive Centre
- Day 16 - 17 November 2010
 - Transport options from *Blenheim*
 - Nelson
 - Okiwi Bay Holiday Park & Lodge
 - Transport options from *Nelson*
 - Kaiteriteri
 - Abel Tasman National Park
 - Transport options from *Kaiteriteri*
 - Takaka
 - Lord of the Rings filming sites
 - Transport options from *Takaka*
 - Motueka
 - Abel Tasman Wilson's Experiences
 - Kahurangi National Park
 - Motueka Top 10 Holiday Park
- Day 17 - 18 November 2010
 - Transport options from *Motueka*
 - Kaikoura
 - Albatross Encounter
 - Whale Watch Kaikoura Ltd
 - Alpine-Pacific Holiday Park
 - The wildlife of Kaikoura
- Day 18 - 19 November 2010
 - Transport options from *Kaikoura*
 - Greymouth
 - Punakaiki pancake rocks and blowholes
 - Greymouth Seaside Top 10 Holiday Park
- Day 19 - 20 November 2010
 - Transport options from *Greymouth*
 - Franz Josef
 - Franz Josef Heli Hike
 - Westland Tai Poutini National Park
 - Transport options from *Franz Josef*
 - Fox Glacier
 - Fox Glacier Holiday Park
 - Fox Glacier Guiding
 - Transport options from *Fox Glacier*
 - Haast
 - Haast River Safari
 - Haast Lodge

- Day 20 - 21 November 2010
 - Transport options from *Haast*
 - Arrowtown
 - Waitiri Creek Wines Ltd.
 - Transport options from *Arrowtown*
 - Queenstown
 - Lake Wakatipu
 - Shotover Top 10 Holiday Park
 - Skippers Road
- Day 21 - 22 November 2010
 - Transport options from *Queenstown*
 - Milford Sound
 - Milford Sound
 - Fiordland National Park
 - Transport options from *Milford Sound*
 - Te Anau
 - Fiordland's Marine Reserves
 - Te Anau Top 10 Holiday Park
 - Mossburn Country Park
- Day 22 - 23 November 2010
 - Transport options from *Te Anau*
 - Wanaka
 - Lakes Wanaka and Hawea
 - Transport options from *Wanaka*
 - Mt Cook Village
 - Aoraki/Mount Cook National Park
 - Glentanner Park (Mount Cook) Ltd
- Day 23 - 24 November 2010
 - Transport options from *Mt Cook Village*
 - Dunedin
 - Otago Peninsula
 - Otago Museum
 - Elm Wildlife Tours
 - Aaron Lodge Top 10 Holiday Park
 - The Orokonui Ecosanctuary
 - Royal Albatross Centre
 - Elm Wildlife Tours
 - Nature Guides Otago
 - Elm Wildlife Tours
- Day 24 - 25 November 2010
 - Transport options from *Dunedin*
 - Oamaru
 - Moeraki Boulders
 - Transport options from *Oamaru*
 - Lake Tekapo
 - Transport options from *Lake Tekapo*
 - Omarama
 - Omarama Top 10 Holiday Park
- Day 25 - 26 November 2010
 - Transport options from *Omarama*
 - Ashburton

- Canterbury Plains
- Transport options from *Ashburton*
- Christchurch

DISCLAIMER

Calendar

Day 1 - *2 November 2010*

Auckland

A city/town in the Auckland Region

Auckland, New Zealand's largest population centre, is poised between two enormous harbours and dotted with extinct volcanic cones. The region is a fusion of four cities – Auckland, Manukau, North Shore and Waitakere – with cultural elements that span from Polynesia and Asia to the United Kingdom and Eastern Europe. While Auckland acts as a gateway to New Zealand, it's also a destination in its own right. Visitors can explore the islands of the Hauraki Gulf by ferry or charter boat, walk the forest tracks of the Waitakere Ranges, follow wine trails and enjoy the relaxing pleasures of urban life by the sea.

Functional facts: Approx. population 1.3 million, international airport, cruise ship port, several i-SITE visitor centres.

I-SITES IN AUCKLAND

AUCKLAND I-SITE VISITOR CENTRE - DOMESTIC TERMINAL

The Visitor Centre at the Domestic Terminal can provide information and reservations for accommodation, rental cars, transport and tours.

Address: Air NZ Domestic Terminal, Auckland Airport, Auckland
Phone: +64 +64 9 2568480
Freephone: +64 0800 282 552
Fax: +64 +64 9 2568225
Email: domestic@aucklandnz.com
Website: www.aucklandnz.com

AUCKLAND I-SITE VISITOR CENTRE - INTERNATIONAL AIRPORT

Open 7 days a week from 5 am until the last flight. Hotel reservations, rental car bookings, tours, train & ferry tickets and Maps are available at the centre.

Address: Arrivals Hall, International Airport, Auckland
Phone: +64 +64 9 2756467
Freephone: +64 0800 282 552
Fax: +64 +64 9 256 8942
Email: reservations@aucklandnz.com
Website: www.aucklandnz.com

AUCKLAND I-SITE VISITOR CENTRE - PRINCES WHARF

Travel reservations and advice for transport, tours, accommodation, rental cars, attractions and adventure activities - Auckland and New Zealand.

Address: 137 Quay Street, Princes Wharf, Auckland
Phone: +64 +64 9 307 0615
Freephone: +64 0800 282 552
Fax: +64 +64 9 3072614
Email: reservations@aucklandnz.com
Website: www.aucklandnz.com

AUCKLAND I-SITE VISITOR CENTRE - SKYCITY ATRIUM

Travel reservations and advice for transport, tours, accommodation, rental cars, attractions and adventure activities - Auckland and New Zealand.

Address: SKYCITY Atrium, Victoria Street, Auckland
Phone: +64 +64 9 363 7182
Freephone: +64 0800 282 552
Fax: +64 +64 9 3637181
Email: skycity@aucklandnz.com
Website: www.aucklandnz.com

DEVONPORT I-SITE VISITOR CENTRE

Friendly, informative, booking service for accommodation, activities, and tours within New Zealand

Address: 3 Victoria Road, Devonport, Auckland
Phone: +64 +64 9 4460677
Fax: +64 +64 9 4460698
Email: visitorinfo@northshorecity.govt.nz
Website: www.northshorenz.com

TAKAPUNA I-SITE VISITOR CENTRE

Visit us for information on what to see and what to do when visiting North Shore City. Information and booking services offered for travel within New Zealand.

Address: 49 Hurstmere Road, Takapuna, Auckland
Phone: +64 +64 9 4868670
Fax: +64 +64 9 4868562
Email: visitorinfo@northshorecity.govt.nz
Website: www.northshorenz.com

TRAVELLING FROM AUCKLAND TO OREWA

DRIVING DISTANCE: 23km / 14 miles
TRAVEL TIMES: By road - approximately 20 minutes (by road)

Orewa

A city/town *in the* Auckland Region

Just half an hour north of Auckland's harbour bridge, the town of Orewa spreads inland from the edge of a magnificent three kilometre beach. It's a great destination if you like swimming, surfing, kayaking, windsurfing and kite surfing. For coastal views, you can't beat a stroll along the Millennium Walkway. Beyond the beach, entertainment possibilities include golf at Gulf Harbour, wine trails, hiking in regional parks, ten pin bowling, cycling, mini golf, cinema, horse riding, go-carting, indoor skiing and thermal hot pools. Orewa has a comprehensive shopping centre and a wide selection of eating places. Accommodation is plentiful.

Functional facts: Approx 5000 population, i-Site Visitor Centre, good range of shops and services. For more information: www.orewabeach.co.nz

I-SITES IN OREWA

OREWA I-SITE VISITOR INFORMATION CENTRE

For all your up to date information about local attractions, information and reservations on all coach tours, ferry bookings and Internet use, come and see us at the Orewa i-SITE Visitor Centre.

Address: 214a Hibiscus Coast Highway, Orewa
Phone: +64 +64 9 4260076
Fax: +64 +64 9 4260086
Email: orewavic@rodney.govt.nz
Website: www.rodneynz.com

DAY 1 ACCOMMODATION

OREWA BEACH TOP 10 HOLIDAY PARK

Accommodation > Holiday Parks *in* Orewa, Auckland Region

Holiday Park located on beautiful Orewa Beach. We offer powered sites, standard cabins, kitchen cabins and self contained units.

Stunning views, plenty of mature trees for shade. Public transport to Auckland City, walking distance to cafe's restaurants and shops, adjacent to reserve.

Just one hour to Auckland Airport.

Ideal stopping point to and from Northland.

Price range: \$NZ 17 - 120



Qualmark Rating

Address: 265 Hibiscus Coast Highway, Orewa
Phone: +64 +64 9 426 5832
Fax: +64 +64 9 426 7883
Email: obhpark@rodney.govt.nz
Website: www.orewabeachtop10.co.nz

[View Full Details](#)

LONG BAY - OKURA MARINE RESERVE, NORTH AUCKLAND

Scenic Highlights > National Parks & Marine Reserves *in* Orewa, Auckland Region



Less than half an hour from Auckland's CBD, this marine reserve runs along the edge of a beautiful sandy beach.

Contact: Department of Conservation
Phone: +64 9 4459142
Fax: +64 9 4459637
Website: www.doc.govt.nz/templates/podcover.aspx?id=33870

[View Full Details](#)

Devonport i-SITE Visitor Centre

Day 2 - 3 November 2010

TRAVELLING FROM OREWA TO DARGAVILLE

DRIVING DISTANCE: 144km / 89 miles
TRAVEL TIMES: By road - approximately 2 hours 5 minutes (by road)

Dargaville

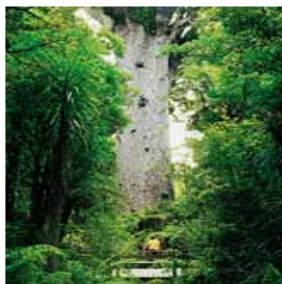
A city/town *in the* Northland Region

Originally a timber town, founded during the heyday of kauri felling and gum digging, Dargaville is built along the edge of the wide Northern Wairoa River. Dairy farming is the main local industry; the district also produces around two thirds of New Zealand's kumara (sweet potato) crop. The town has re-employed many of its 19th century buildings – you'll find cafes, art shops and other interesting retail opportunities. The Dargaville Museum has an interesting collection of Maori artefacts, shipwreck treasures and gum digging exhibits. At nearby Matakoho, a theme museum honours the historic kauri industry.

Functional facts: Approx. population: 5500, i-SITE Visitor Centre, good range of shops and services.

WAIPOUA KAURI FOREST

Scenic Highlights > Parks & Reserves *in* Dargaville, Northland Region



A five minute walk from the roadside will bring you to the foot of Tane Mahuta, probably the largest tree you'll ever lay eyes upon.

Contact: Whangarei i-SITE Visitor Centre
Phone: +64 +64 9 4381079
Fax: +64 +64 9 4382943
Email: whangarei@i-SITE.org
Website: www.whangareinz.org.nz

[View Full Details](#)

Whangarei i-SITE Visitor Centre

DAY 2 ACCOMMODATION

KAURI COAST TOP10 HOLIDAY PARK

Accommodation > Holiday Parks *in* Dargaville, Northland Region

Surrounded by native bush with river boundary. A parklike setting, clean green areas. Beautiful native bush, fresh water river round boundary of camp with great swimming holes. 2.5 to 3hrs north of Auckland on highway 12. 32km North of Dargaville. Just north of Kai-iwi Lakes. On the door step of beautiful Trounson Park. Just south of Waipoua Forest. Come and see the king of the forest Tane Mahuta.

Park Studio, Self-contained units, Ensuite units, Kitchen Cabins, Standard Cabins, Powered Sites, Tent Sites.

Price range: \$NZ 34 - 115

★★★★★
Qualmark Rating

Address: Trounson Park Road, Kaihu, Dargaville
Phone: +64 +64 9 4390621
Fax: +64 +64 9 4390621
Email: kauricoast.top10@xtra.co.nz
Website: www.kauricoasttop10.co.nz

[View Full Details](#)

Day 3 - 4 November 2010

TRAVELLING FROM DARGAVILLE TO PAIHIA

DRIVING DISTANCE: 131km / 81 miles

TRAVEL TIMES: By road - approximately 2 hours 6 minutes (by road)

Paihia

A city/town *in the* Northland Region

Paihia makes an excellent base for exploring the Bay of Islands. It has an extensive choice of accommodation and a good-sized town centre. From the wharf you can arrange a trip to the outer islands, hook into a fishing expedition or catch ferry to Russell. Top local adventures include cruising to the 'hole in the rock' at the tip of Cape Brett, finding dolphins (and maybe swimming with them) and sea kayak tours. Paihia is also just down the road from the historic Treaty House at Waitangi, which marks the beginning of New Zealand as a nation. Just west of Paihia is Haruru, where you'll find an impressive waterfall and a boardwalk.

Functional facts: Approx. population 1850, i-SITE Visitor Centre, wide range of shops and restaurants.

I-SITES IN PAIHIA

BAY OF ISLANDS I-SITE VISITOR CENTRE

We offer a range of services including all accommodation, attraction, activity, bus, train and ferry bookings. Public internet & e-mail service.

Address: The Wharf, Marsden Road, PAIHIA, Paihia

Phone: +64 +64 9 4027345

Freephone: +64 0800 363 463

Fax: +64 +64 9 4027314

Email: bayofislands@i-SITE.org

Website: www.visitfarnorthnz.com

THE BAY OF ISLANDS

Scenic Highlights > Coastal Highlights *in* Paihia, Northland Region



When you arrive in Paihia, find yourself a cruise or a charter boat and embark on a voyage of discovery around the islands.

Contact: Bay of Islands i-SITE Visitor Centre

Phone: +64 +64 9 4027345

Fax: +64 +64 9 4027314

Email: bayofislands@i-SITE.org

Website: www.visitfarnorthnz.com

[View Full Details](#)

Bay of Islands i-SITE Visitor Centre

DAY 3 ACCOMMODATION

BEACHSIDE HOLIDAY PARK

Accommodation > Holiday Parks *in* Paihia, Northland Region



Nestled between a quiet bay and native bush just three minutes from the center of Paihia. Beachside Holiday Park is the perfect place to base yourself during your stay in the Bay of Islands.

Enjoy scenic walks, native birds and forests. Relax in our quiet friendly environment or explore the Bay of Islands.

We offer great fishing, diving, snorkeling, dolphin watching, swimming, scenic tours, and trips to Cape Reinga. A tour desk and pick up service is available for most tours from the park.

Price range: \$NZ 14 - 150

★★★★☆
Qualmark Rating

Address: 1290 Paihia - Opuia Road, Paihia

Phone: +64 +64 9 402 7678

Fax: +64 +64 9 402 6678

Email: info@beachsideholiday.co.nz

Website: www.beachsideholiday.co.nz

[View Full Details](#)

KAWITI CAVES (WAIOMIO CAVES)

Scenic Highlights > Natural Phenomena *in* Paihia, Northland Region

Just before you reach Kawakawa, detour to Kawiti Caves. Discover stalactites, glow worms and Maori history.

Contact: Bay of Islands i-SITE Visitor Centre



Phone: +64 +64 9 4027345
Fax: +64 +64 9 4027314
Email: bayofislands@i-SITE.org
Website: www.visitfarnorthnz.com

[View Full Details](#)

Bay of Islands i-SITE Visitor Centre

Day 4 - 5 November 2010

TRAVELLING FROM PAIHIA TO CAPE REINGA

DRIVING DISTANCE: 223km / 138 miles
TRAVEL TIMES: By road - approximately 3 hours 7 minutes (by road)

Cape Reinga

A city/town *in the* Northland Region

Reaching the iconic lighthouse at Cape Reinga is a goal that many travellers set themselves. While it's not quite the most northern point of New Zealand (North Cape is further north, but it's a scientific reserve and not open to the public), Cape Reinga is definitely the end of the road. Here the Tasman Sea meets the Pacific Ocean, in a spectacular swirl of currents. At the northernmost tip of the cape is a gnarled pohutukawa tree, believed to be over 800 years old. According to Maori oral history, the spirits of Maori deceased leap from this tree into the ocean to return to their ancestral homeland of Hawaiiiki.

Functional facts: No population; fuel, meals and camp sites at Waitaki Landing (19 kilometres south).

TRAVELLING FROM CAPE REINGA TO KAITAIA

DRIVING DISTANCE: 116km / 72 miles
TRAVEL TIMES: By road - approximately 1 hour 41 minutes (by road)

Kaitaia

A city/town *in the* Northland Region

Kaitaia is known as the gateway to the far north – it's the last major town before you reach the top of New Zealand. From here you can take a tour to Cape Reinga and along Ninety Mile Beach (although the beach is classed as a road, rental car companies won't let you drive their vehicles on the sand for safety reasons). Around Kaitaia you can sample wine at the country's northernmost vineyard and visit the regional museum to learn about gum digging and Maori history. There's also a Maori cultural centre, where you can try your hand at weaving and carving. Local adventure activities include 4WD tours of the gumfields and horse treks.

Functional facts: Approx. population 5600, i-SITE Visitor Centre, good range of shops and services.

I-SITES IN KAITAIA

FAR NORTH I-SITE VISITOR CENTRE

Full booking and information service for all accommodation, attractions, activities and tours around the Far North & Northland.

Address: Centennial Park, South Road, KAITAIA, Kaitaia
Phone: +64 +64 9 4080879
Fax: +64 +64 9 4082546

HOKIANGA I-SITE VISITOR CENTRE

All bookings and information on accommodation, activities, tours and attractions for the Hokianga, Far North, Bay of Islands and Northland.

Address: 29 State Highway 12, Opononi, Hokianga
Phone: +64 +64 9 4058869
Fax: +64 +64 9 4058317

Email: kaitaia@i-SITE.org
Website: www.visitfarnorthnz.com

Email: hokianga@i-SITE.org
Website: www.visitfarnorthnz.com

DAY 4 ACCOMMODATION

WHATUWHIWHI TOP 10 HOLIDAY PARK

Accommodation > Holiday Parks *in* Kaitaia, Northland Region



Quiet secluded family park, close to water with full facilities, motels, cabins & camping.

Good for fishing, diving or just relaxing. Book a trip to Cape Reinga, play golf or enjoy a meal at the local winery close-by.

Price range: \$NZ 18 - 375



Qualmark Rating

Address: 17 Whatuwhiwhi Road, Karikari Peninsula, Kaitaia

Phone: +64 +64 9 408 7202

Fax: +64 +64 9 408 7502

Email: whatuwhiwhi@xtra.co.nz

Website: www.whatuwhiwhitop10.co.nz

[View Full Details](#)

NINETY MILE BEACH

Scenic Highlights > Coastal Highlights *in* Kaitaia, Northland Region



A world of forest, sand and ocean waves, 90 Mile Beach is an almost neverending paradise.

Contact: Far North i-SITE Visitor Centre

Phone: +64 +64 9 4080879

Fax: +64 +64 9 4082546

Email: kaitaia@i-SITE.org

Website: www.visitfarnorthnz.com

[View Full Details](#)

Far North i-SITE Visitor Centre

Day 5 - 6 November 2010

TRAVELLING FROM KAITAIA TO KOHUKOHU

DRIVING DISTANCE: 61km / 38 miles

TRAVEL TIMES: By road - approximately 53 minutes (by road)

Kohukohu

A city/town *in* the Northland Region

Kohukohu was once the largest town on the Hokianga Harbour, in the days of kauri milling. There's still plenty of history to see around the streets – heritage villas, the Masonic Lodge, the Anglican Church, a police station and an old school. The water's edge café comes highly recommended, especially at full tide. For entertainment, hire a kayak or try your luck fishing off the wharf. Kohukohu is four kilometres from the Hokianga ferry landing – a vehicular ferry service connects the northern side of the harbour to Rawene on the southern side.

Functional facts: Approx. population 220, limited accommodation, café.

WAIRERE BOULDERS

Activity > Attractions > Volcanic/Geothermal *in* Kohukohu, Northland Region



The "Wairere Boulders" have been formed by a lava flow which turned into a 30 m thick basalt layer about 2.8 million years ago. A massive crack split the layer in half and the softer soil underneath started to erode. Consequent erosion created a huge accumulation of thousands of basalt boulders which now lie on the valley floor. The boulders' surfaces are fluted due to chemical leaching, caused by soil acidity and tannin from Kauri leaves. Thanks to the construction of 22 wooden structures the boulder formation can be viewed from close. The stroll leads over, around and under the boulders, which are decorated by

many native plants, lichens and fungi.

Qualmark Endorsed
Visitor Activity

Address: 70 McDonnell Road, Hokianga Harbour, Horeke

Phone: +64 +64 9 4019935

Email: felix@wairereboulders.co.nz

Website: www.wairereboulders.co.nz

[View Full Details](#)

TRAVELLING FROM KOHUKOHU TO OKAIHAU

DRIVING DISTANCE: 68km / 42 miles

TRAVEL TIMES: By road - approximately 59 minutes (by road)

Okaihau

A city/town *in the* Northland Region

Located on the western side of Lake Omapere in Northland, the township of Okaihau was established in 1862 when a group of Canadian settlers began clearing land in the area. The town has a useful assortment of shops and services, a hotel and a golf course. Its special claim to fame is a fire service museum with a large collection of vehicles, uniforms, photographs and memorabilia. From Okaihau you can follow Horeke Road to the Wairere Boulders, a fascinating nature park where huge basalt rocks have filled a valley. Functional facts: Approx. population 680, basic shops and services, service station.

WAIRERE BOULDERS

Scenic Highlights > Natural Phenomena *in* Okaihau, Northland Region



A geomorphic and world unique valley can be visited on an easy and wind sheltered path, leading over, around and under the boulders.

[View Full Details](#)

i-SITE Visitor Centres in

TRAVELLING FROM OKAIHAU TO TUTUKAKA COAST

DRIVING DISTANCE: 116km / 72 miles

TRAVEL TIMES: By road - approximately 1 hour 55 minutes (by road)

Tutukaka Coast

A city/town *in the* Northland Region

The heads of this beautiful natural harbour open to the Pacific Ocean and the Poor Knights Islands marine reserve, a world-renowned diving location. Recreational diving, line fishing and big game fishing trips all leave from the modern marina. There are some picturesque beaches within the harbour and the road north leads to several spectacular white-sand ocean beaches between forest-covered headlands. Tutukaka and Ngunguru, a few kilometres south, offer restaurants, cafés and a wide range of accommodation including private holiday homes, resort motels, apartments, B&Bs and a campground. It's a good idea to book ahead in summer, especially around Christmas/New Year. Functional facts: Resident population Tutukaka / Ngunguru approx 1,500, small shops, a food mart and a service station.

DIVE! TUTUKAKA

Activity > Water Activities > Diving *in* Tutukaka Coast, Northland Region



The Poor Knights Islands offer the best sub-tropical diving in the world. The Islands are a total Marine Reserve, where water temperatures are warmer and visibility is clearer than on the New Zealand coast. The complex underwater landscape results in a unique environment in which subtropical and temperate marine life co-exist with extraordinary diversity, beauty and density.

Dive! Tutukaka is New Zealand's largest dive charter operator, Qualmark endorsed, and a PADI 5 Star IDC, and National Geographic Diver Centre, operating 7 purpose designed dive boats that

ensure small groups and personal service from professional crew. Full equipment hire, air fills, free pick up service, a lunch option; everything you need is provided.

Qualmark Endorsed
Visitor Activity

Address: Poor Knights Dive Centre, Marina Road, RD 3, Tutukaka

Phone: +64 +64 9 4343867

Fax: +64 +64 9 4343884

Email: info@diving.co.nz

Website: www.diving.co.nz

[View Full Details](#)

TRAVELLING FROM TUTUKAKA COAST TO WHANGAREI

DRIVING DISTANCE: 34km / 21 miles

TRAVEL TIMES: By road - approximately 48 minutes (by road)

Whangarei

A city/town *in* the Northland Region

Whangarei is a subtropical city by the edge of a beautiful harbour. Mount Parahaki watches over the city – you can walk or drive to the summit for great views. The coastal drive to Whangarei Heads is another way to appreciate the region's scenery. At the Quayside Town Basin complex you'll find a boat marina, cafés, restaurants and a variety of appealing shops. West of the city centre, in the suburb of Maunu, there's an excellent museum and a native bird recovery centre, which nurses birds back to health. Whangarei is a good place to stock up on essential supplies if you're planning to spend a few days at one of the region's beaches.

Functional facts: Approx. population 45,800, i-SITE Visitor Centre, domestic airport.

I-SITES IN WHANGAREI

WHANGAREI I-SITE VISITOR CENTRE

We provide a free information and booking service for all your accommodation, activities and transport throughout New Zealand. Agents for Interislander, Tranzrail, Intercity and Nakedbus.com.

Address: Tarewa Park, 92 Otaika Road, Otaika

Phone: +64 +64 9 4381079

Fax: +64 +64 9 4382943

Email: whangarei@i-SITE.org

Website: www.whangareinz.org.nz

POOR KNIGHTS ISLANDS

Scenic Highlights > National Parks & Marine Reserves *in* Whangarei, Northland Region

The Poor Knights Islands, Northland New Zealand, are often called one of the world's top dive locations.

Contact: Department of Conservation

Phone: +64 +64 9 4302470

Fax: +64 +64 9 4302479

Email: northland@doc.govt.nz

Website: www.doc.govt.nz/templates/podcover.aspx?id=33809


[View Full Details](#)

Whangarei i-SITE Visitor Centre

Day 6 - 7 November 2010

TRAVELLING FROM WHANGAREI TO TUTUKAKA COAST

DRIVING DISTANCE: 34km / 21 miles

TRAVEL TIMES: By road - approximately 48 minutes (by road)

Tutukaka Coast

A city/town *in the* Northland Region

The heads of this beautiful natural harbour open to the Pacific Ocean and the Poor Knights Islands marine reserve, a world-renowned diving location. Recreational diving, line fishing and big game fishing trips all leave from the modern marina. There are some picturesque beaches within the harbour and the road north leads to several spectacular white-sand ocean beaches between forest-covered headlands. Tutukaka and Ngunguru, a few kilometres south, offer restaurants, cafés and a wide range of accommodation including private holiday homes, resort motels, apartments, B&Bs and a campground. It's a good idea to book ahead in summer, especially around Christmas/New Year. Functional facts: Resident population Tutukaka / Ngunguru approx 1,500, small shops, a food mart and a service station.

DIVE! TUTUKAKA

Activity > Water Activities > Diving *in* Tutukaka Coast, Northland Region



The Poor Knights Islands offer the best sub-tropical diving in the world. The Islands are a total Marine Reserve, where water temperatures are warmer and visibility is clearer than on the New Zealand coast. The complex underwater landscape results in a unique environment in which subtropical and temperate marine life co-exist with extraordinary diversity, beauty and density.

Dive! Tutukaka is New Zealand's largest dive charter operator, Qualmark endorsed, and a PADI 5 Star IDC, and National Geographic Diver Centre, operating 7 purpose designed dive boats that

ensure small groups and personal service from professional crew. Full equipment hire, air fills, free pick up service, a lunch option; everything you need is provided.

Qualmark Endorsed
Visitor Activity

Address: Poor Knights Dive Centre, Marina Road, RD 3, Tutukaka

Phone: +64 +64 9 4343867

Fax: +64 +64 9 4343884

Email: info@diving.co.nz

Website: www.diving.co.nz

[View Full Details](#)

TUTUKAKA COAST

Scenic Highlights > Coastal Highlights *in* Tutukaka Coast, Northland Region

Detour to the east from Whangarei and discover the beaches and bays of the Tutukaka Coast - each one is distinctly different.

Contact: Whangarei i-SITE Visitor Centre

Phone: +64 +64 9 4381079

Fax: +64 +64 9 4382943

Email: whangarei@i-SITE.org

Website: www.whangareinz.org.nz


[View Full Details](#)

Whangarei i-SITE Visitor Centre

Day 7 - 8 November 2010

DIVE! TUTUKAKA

Activity > Water Activities > Diving *in* Tutukaka Coast, Northland Region



The Poor Knights Islands offer the best sub-tropical diving in the world. The Islands are a total Marine Reserve, where water temperatures are warmer and visibility is clearer than on the New Zealand coast. The complex underwater landscape results in a unique environment in which subtropical and temperate marine life co-exist with extraordinary diversity, beauty and density.

Dive! Tutukaka is New Zealand's largest dive charter operator, Qualmark endorsed, and a PADI 5 Star IDC, and National Geographic Diver Centre, operating 7 purpose designed dive boats that

ensure small groups and personal service from professional crew. Full equipment hire, air fills, free pick up service, a lunch option; everything you need is provided.

Qualmark Endorsed
Visitor Activity

Address: Poor Knights Dive Centre, Marina Road, RD 3, Tutukaka

Phone: +64 +64 9 4343867

Fax: +64 +64 9 4343884

Email: info@diving.co.nz

Website: www.diving.co.nz

[View Full Details](#)

Day 8 - 9 November 2010

TRAVELLING FROM TUTUKAKA COAST TO HELENSVILLE

DRIVING DISTANCE: 163km / 101 miles

TRAVEL TIMES: By road - approximately 2 hours 40 minutes (by road)

By Air - approximately 35 minutes (by air) + 1 hour 51 minutes (by road)

Helensville

A city/town *in the* Auckland Region

Helensville was named one of New Zealand's 'Top Ten Small Towns' by a national magazine. It's just 40 minutes from downtown Auckland, but has all the hallmarks of a classic country town – green pastures, historic architecture and a friendly population of down-to-earth people. The town has two museums – one devoted to pioneer days; another that honours vintage machinery. Close to Helensville you'll find naturally heated pools for swimming and water slides. Other local attractions include vineyards, beaches, horse riding, golf courses and boats that can show you around the immense Kaipara Harbour.

Functional facts: Approx. population 2230, information centre, good range of shops and services, limited accommodation.

MURIWAI GANNET COLONY

Scenic Highlights > Coastal Highlights *in* Helensville, Auckland Region



From August to March each year you can watch the comings and goings of a busy gannet colony. It's hugely entertaining.

Contact: Auckland i-SITE Visitor Centre - Princes Wharf
Phone: +64 +64 9 307 0615
Fax: +64 +64 9 3072614
Email: reservations@aucklandnz.com
Website: www.aucklandnz.com

[View Full Details](#)

Auckland i-SITE Visitor Centre - Princes Wharf

TRAVELLING FROM HELENSVILLE TO AUCKLAND

DRIVING DISTANCE: 47km / 29 miles

TRAVEL TIMES: By road - approximately 39 minutes (by road)

Auckland

A city/town in the Auckland Region

Auckland, New Zealand's largest population centre, is poised between two enormous harbours and dotted with extinct volcanic cones. The region is a fusion of four cities – Auckland, Manukau, North Shore and Waitakere – with cultural elements that span from Polynesia and Asia to the United Kingdom and Eastern Europe. While Auckland acts as a gateway to New Zealand, it's also a destination in its own right. Visitors can explore the islands of the Hauraki Gulf by ferry or charter boat, walk the forest tracks of the Waitakere Ranges, follow wine trails and enjoy the relaxing pleasures of urban life by the sea.

Functional facts: Approx. population 1.3 million, international airport, cruise ship port, several i-SITE visitor centres.

I-SITES IN AUCKLAND

AUCKLAND I-SITE VISITOR CENTRE - DOMESTIC TERMINAL

The Visitor Centre at the Domestic Terminal can provide information and reservations for accommodation, rental cars, transport and tours.

Address: Air NZ Domestic Terminal, Auckland Airport, Auckland
Phone: +64 +64 9 2568480
Freephone: +64 0800 282 552
Fax: +64 +64 9 2568225
Email: domestic@aucklandnz.com
Website: www.aucklandnz.com

AUCKLAND I-SITE VISITOR CENTRE - INTERNATIONAL AIRPORT

Open 7 days a week from 5 am until the last flight. Hotel reservations, rental car bookings, tours, train & ferry tickets and Maps are available at the centre.

Address: Arrivals Hall, International Airport, Auckland
Phone: +64 +64 9 2756467
Freephone: +64 0800 282 552
Fax: +64 +64 9 256 8942
Email: reservations@aucklandnz.com
Website: www.aucklandnz.com

AUCKLAND I-SITE VISITOR CENTRE - PRINCES WHARF

Travel reservations and advice for transport, tours, accommodation, rental cars, attractions and adventure activities - Auckland and New Zealand.

Address: 137 Quay Street, Princes Wharf, Auckland
Phone: +64 +64 9 307 0615
Freephone: +64 0800 282 552
Fax: +64 +64 9 3072614
Email: reservations@aucklandnz.com
Website: www.aucklandnz.com

AUCKLAND I-SITE VISITOR CENTRE - SKYCITY ATRIUM

Travel reservations and advice for transport, tours, accommodation, rental cars, attractions and adventure activities - Auckland and New Zealand.

Address: SKYCITY Atrium, Victoria Street, Auckland
Phone: +64 +64 9 363 7182
Freephone: +64 0800 282 552
Fax: +64 +64 9 3637181
Email: skycity@aucklandnz.com
Website: www.aucklandnz.com

DEVONPORT I-SITE VISITOR CENTRE

Friendly, informative, booking service for accommodation, activities, and tours within New Zealand

Address: 3 Victoria Road, Devonport, Auckland
Phone: +64 +64 9 4460677
Fax: +64 +64 9 4460698
Email: visitorinfo@northshorecity.govt.nz
Website: www.northshorenz.com

TAKAPUNA I-SITE VISITOR CENTRE

Visit us for information on what to see and what to do when visiting North Shore City. Information and booking services offered for travel within New Zealand.

Address: 49 Hurstmere Road, Takapuna, Auckland
Phone: +64 +64 9 4868670
Fax: +64 +64 9 4868562
Email: visitorinfo@northshorecity.govt.nz
Website: www.northshorenz.com

TRAVELLING FROM AUCKLAND TO OREWA

DRIVING DISTANCE: 23km / 14 miles

TRAVEL TIMES: By road - approximately 20 minutes (by road)

 **Orewa****A city/town in the Auckland Region**

Just half an hour north of Auckland's harbour bridge, the town of Orewa spreads inland from the edge of a magnificent three kilometre beach. It's a great destination if you like swimming, surfing, kayaking, windsurfing and kite surfing. For coastal views, you can't beat a stroll along the Millennium Walkway. Beyond the beach, entertainment possibilities include golf at Gulf Harbour, wine trails, hiking in regional parks, ten pin bowling, cycling, mini golf, cinema, horse riding, go-carting, indoor skiing and thermal hot pools. Orewa has a comprehensive shopping centre and a wide selection of eating places. Accommodation is plentiful.

Functional facts: Approx 5000 population, i-Site Visitor Centre, good range of shops and services. For more information: www.orewabeach.co.nz

I-SITES IN OREWA**OREWA I-SITE VISITOR INFORMATION CENTRE**

For all your up to date information about local attractions, information and reservations on all coach tours, ferry bookings and Internet use, come and see us at the Orewa i-SITE Visitor Centre.

Address: 214a Hibiscus Coast Highway, Orewa
Phone: +64 +64 9 4260076
Fax: +64 +64 9 4260086
Email: orewavic@rodney.govt.nz
Website: www.rodneynz.com

DAY 8 ACCOMMODATION **OREWA BEACH TOP 10 HOLIDAY PARK****Accommodation > Holiday Parks in Orewa, Auckland Region**

Holiday Park located on beautiful Orewa Beach. We offer powered sites, standard cabins, kitchen cabins and self contained units.

Stunning views, plenty of mature trees for shade. Public transport to Auckland City, walking distance to cafe's restaurants and shops, adjacent to reserve.

Just one hour to Auckland Airport.

Ideal stopping point to and from Northland.

Price range: \$NZ 17 - 120



Qualmark Rating

Address: 265 Hibiscus Coast Highway, Orewa
Phone: +64 +64 9 426 5832
Fax: +64 +64 9 426 7883
Email: obhpark@rodney.govt.nz
Website: www.orewabeachtop10.co.nz

[View Full Details](#)

Day 9 - 10 November 2010**TRAVELLING FROM OREWA TO WAITOMO CAVES**

DRIVING DISTANCE: 218km / 135 miles

TRAVEL TIMES:

- By road - approximately 3 hours 10 minutes (by road)
- By Air - approximately 30 minutes (by air) + 1 hour 30 minutes (by road)
- By Rail - approximately 3 hours (by rail) + 34 minutes (by road)

Waitomo Caves

A city/town *in the* Hamilton - Waikato Region

The Waitomo Caves district is famous for its subterranean wonderland. Beneath the surface of this limestone region is a series of vast cave systems decorated with a galaxy of glowworms. Take a gentle boat ride through the Glowworm Grotto and learn about the history of the caves, or for the more adventurous try the unique experience of black water rafting through the spectacular cave system on black rubber tubes.

Other adrenalin-fuelled options include abseiling and zip-lining through caves such as Tumutumu and The Lost World. Other activities in the area include horse riding, farm shows and angora rabbit shearing.

Functional facts: Approx. district population 9500, visitor centre, various forms of accommodation, cafés, limited shopping.

I-SITES IN WAITOMO CAVES

WAITOMO I-SITE VISITOR CENTRE

We provide free objective, unbiased information and bookings for the Waitomo Caves Region and New Zealand wide. See us first for the best view of Waitomo.

Address: 21 Waitomo Caves Road, Waitomo Caves
Phone: +64 +64 7 8787640
Freephone: +64 800 474 839
Fax: +64 +64 7 8786184
Email: waitomo@i-SITE.org
Website: www.waitomodiscovery.org

TRAVELLING FROM WAITOMO CAVES TO MATAMATA

DRIVING DISTANCE: 124km / 77 miles

TRAVEL TIMES:

- By road - approximately 1 hour 45 minutes (by road)
- By Rail - approximately 35 minutes (by rail) + 1 hour 9 minutes (by road)

Matamata

A city/town *in the* Hamilton - Waikato Region

Matamata has attracted Lord of the Rings enthusiasts from all over the world since a local farm became the setting for "the Shire" in Peter Jackson's Lord of the Rings trilogy. You can take a tour of the Hobbiton Movie Set, including the hobbit holes, and discover middle-earth movie magic. A number of great farmstays and farm tours are also on offer in Matamata. Just east of Matamata you can discover the North Island's highest waterfalls, Wairere Falls, which are a spectacular sight plunging 153m. The Wairere Falls walking track showcases a diverse range of natural scenery and from the lookout you can see magnificent views over the vally and the Waikato Plains.

Functional facts: Approx. population 7800, i-SITE Visitor Centre, good range of shops and services.

I-SITES IN MATAMATA

MATAMATA I-SITE VISITOR CENTRE

Lord of the Rings, Hobbiton movie set & farm tours, domestic travel, accommodation and activity bookings.

Address: 45 Broadway, Matamata
Phone: +64 +64 7 8887260
Fax: +64 +64 7 8885653
Email: info@matamatanz.co.nz
Website: www.matamatanz.co.nz

MATAMATA - HOME OF HOBBITON

Scenic Highlights > Scenic Views *in* Matamata, Hamilton - Waikato Region

The Waikato town of Matamata played the set for Hobbiton, the home of Bilbo and Frodo in Peter Jackson's The Lord of the Rings.

Contact: Matamata i-SITE Visitor Centre
Phone: +64 +64 7 8887260
Fax: +64 +64 7 8885653
Email: info@matamatanz.co.nz
Website: www.matamatanz.co.nz

[View Full Details](#)

Matamata i-SITE Visitor Centre



TRAVELLING FROM MATAMATA TO ROTORUA

DRIVING DISTANCE: 87km / 54 miles
TRAVEL TIMES: By road - approximately 1 hour 16 minutes (by road)

Rotorua

A city/town in the Rotorua Region

Rotorua sits squarely on the Pacific Ring of Fire, so volcanic activity is part of the city's past and present. The city is also the tribal home of the Te Arawa people, who settled in lakeside geothermal areas more than 600 years ago. Entertaining in any weather, and at any time of the year, Rotorua promises to keep you captivated with geothermal phenomena and special cultural experiences. Geysers, boiling mud pools, marae stays, hangi feasts, an authentic pre-European Maori village and indulgent spa therapies will provide plenty of content for your emails home. Rotorua also has a well-developed adventure culture – everything from sky diving to zorbing.

Functional facts: Approx. population 76,000, i-SITE Visitor Centre, domestic airport.

I-SITES IN ROTORUA

ROTORUA I-SITE VISITOR CENTRE

Tourism Rotorua is about making your visit as easy and enjoyable as possible. We provide free and impartial information.

Address: 1167 Fenton Street, Rotorua
Phone: +64 +64 7 3485179
Freephone: +64 0800 768 678
Fax: +64 +64 7 3486044
Email: rotorua@i-SITE.org
Website: www.rotoruanz.com

WAIMANGU VOLCANIC VALLEY

Activity > Land Activities > Walking/Trekking in Rotorua, Rotorua Region



Waimangu offers an exciting range of self guided eco walks and guided walking tours including easy ecology-focused walks through the craters of the beautiful Waimangu Volcanic Valley.

There are a number of easy walks, mainly downhill, available. See Echo Crater and Frying Pan Lake, the world's largest hot water spring. View mysterious and dramatic Inferno Crater with its beautiful blue hot lake. Return on one of our courtesy shuttle buses to the Waimangu Entrance.

For more advanced hiking, the Mt Haszard Hiking Trail begins at Inferno Crater and moves high above the Waimangu Volcanic Valley floor. This nature hike provides spectacular panoramic views of the valley, Rainbow Mountain, Mt Tarawera and Lake Rotomahana.

Qualmark Endorsed
 Visitor Activity

Address: 587 Waimangu Road, Rotorua
Phone: +64 +64 7 366 6137
Fax: +64 +64 7 366 6607
Email: nature@waimangu.co.nz
Website: www.waimangu.co.nz

[View Full Details](#)

MOUNT TARAWERA

Scenic Highlights > Scenic Views in Rotorua, Rotorua Region

Gaze in awe at Mount Tarawera and imagine the frightening night of June 10 1886, when the mountain's summit split open in a violent eruption.

Contact: Rotorua i-SITE Visitor Centre
Phone: +64 +64 7 3485179



Fax: +64 +64 7 3486044

Email: rotorua@i-SITE.org

Website: www.rotoruanz.com

[View Full Details](#)

Rotorua i-SITE Visitor Centre

KIWI ENCOUNTER

Activity > Wildlife Encounters > Bird Watching *in* Rotorua, Rotorua Region



Learn more about kiwi conservation with a visit to Kiwi Encounter. Operated by the National Kiwi Trust and located on site at Rainbow Springs.

This unique scientific attraction allows you an insight into the entire process of kiwi conservation – from kiwi egg collection in the wild, incubation, hatching and then raising of the kiwi until it's ready to be released back into the wild.

Includes a 45 min guided tour which departs daily on the hour from 10 till 4pm daily.

Qualmark Endorsed
Visitor Activity

Address: Fairy Springs Road, Rotorua

Phone: +64 +64 7 3500440

Fax: +64 +64 7 3500441

Email: info@kiwiencounter.co.nz

Website: www.kiwiencounter.co.nz

[View Full Details](#)

TAMAKI MAORI VILLAGE

Activity > Arts, Culture and Heritage > Cultural Attractions *in* Rotorua, Rotorua Region



Tamaki Maori Village, the South Pacific's gateway to the world of ancient Maori and proud warriors. Journey back in time to a pre-European lifestyle and experience customs and traditions while ambling down the pathways of the rediscovered village as it brings to life traditional tribal songs, dances, myths, legends and spiritual stories. Enjoy the night's festivities with us in a time of sharing and feasting on a banquet of succulent foods cooked traditionally on hot rocks in an earthen oven.

Qualmark Endorsed
Visitor Activity

Address: 1220 Hinemaru street, Rotorua

Phone: +64 +64 7 3492999

Email: bookings@maoriculture.co.nz

Website: www.maoriculture.co.nz

[View Full Details](#)

WHAKAREWAREWA FOREST

Scenic Highlights > Parks & Reserves *in* Rotorua, Rotorua Region



Mountain bike, run or hike on purpose-built trails in a century-old experimental forest with more than 170 different tree species.

Contact: Rotorua i-SITE Visitor Centre

Phone: +64 +64 7 3485179

Fax: +64 +64 7 3486044

Email: rotorua@i-SITE.org

Website: www.rotoruanz.com

[View Full Details](#)

Rotorua i-SITE Visitor Centre

DAY 9 ACCOMMODATION

 **ROTORUA TOP 10 HOLIDAY PARK**
Accommodation > Holiday Parks *in* Rotorua, Rotorua Region

Kia Ora, Rotorua TOP 10 is the closest Holiday Park to the central city. A walk along Pukuatua Street leads to the central city shops, cafe, bars, restaurants and entertainment.

Accommodation available includes studio, one or two bedroom park motels, one bedroom ensuites, standard cabins, campervan (grass or hard standing) and tent sites which are situated in 1.4 hectares of landscaped grounds. Rotorua TOP 10 is the ideal place to base yourself and your family while vacationing in the central North Island and Bay of Plenty.

Local information is available at reception, where bookings for local tours, activities and forward bookings to TOP 10 Holiday Parks can be made.

Price range: \$NZ 18 - 180



Qualmark Rating

Address: 1495 Pukuatua Street, Rotorua**Phone:** +64 +64 7 3481886**Fax:** +64 +64 7 3481867**Email:** stay@rotoruatop10.co.nz**Website:** www.rotoruatop10.co.nz[View Full Details](#)

Day 10 - 11 November 2010

TRAVELLING FROM ROTORUA TO WHAKATANE

DRIVING DISTANCE: 85km / 53 miles**TRAVEL TIMES:** By road - approximately 1 hour 12 minutes (by road)
 **Whakatane**
A city/town *in the* Bay of Plenty Region

The main centre for the Eastern Bay of Plenty, Whakatane is one of the sunniest towns in New Zealand. Just off shore is White Island, a spectacular active volcano that can be visited by launch or helicopter. Guided tours of the island necessitate a gas mask and hard hat. Whakatane is also known for its fishing – more yellow fin tuna are caught here than anywhere else in the country. Other Whakatane attractions include the museum, an observatory and Maori historical sites. The Nga Tapuwae o Toi walkway leads to pa sites, native forest and seabird colonies. Dolphin tours, which can include swimming encounters, run all year.

Functional facts: Approx. population 17,700, i-SITE Visitor Centre, plentiful shops and services, domestic airport.

I-SITES IN WHAKATANE

WHAKATANE I-SITE VISITOR CENTRE

Whakatane Visitor Information service. Local and national booking service.

Address: Quay st, Whakatane**Phone:** +64 +64 7 3086058**Fax:** +64 +64 7 3086020**Email:** whakatane@i-SITE.org**Website:** www.whakatane.com
 **WHITE ISLAND TOURS LTD**
Activity > Attractions > Volcanic/Geothermal *in* Whakatane, Bay of Plenty Region

White Island is New Zealand's only live marine volcano, this steaming beauty lies 49km off the coast of Whakatane.

Step aboard PeeJay, one of two boats purpose built for White Island Tours and let the crew take you on a 6 hour journey you will never forget. Upon arrival, trained guides will give a full safety briefing before you start your fully guided tour within the inner crater of White Island. Hissing fumaroles, glittering crystals, steaming mounds and standing on the edge of the mighty crater are all part of the tour. Safety gear consisting of a gas

mask and hard hat, are provided as well as refreshments and lunch.

Qualmark Endorsed Visitor Activity

Address: 15 Strand East, Whakatane**Phone:** +64 +64 7 3089588**Fax:** +64 +64 7 3080303**Email:** info@whiteisland.co.nz**Website:** www.whiteisland.co.nz[View Full Details](#)

Tours depart daily from Whakatane weather permitting. Bookings are essential.

DAY 10 ACCOMMODATION

OHOPE BEACH TOP 10 HOLIDAY PARK

Accommodation > Holiday Parks *in* Whakatane, Bay of Plenty Region



Our holiday park is situated on the beautiful shores of Ohope Beach and Ohiwa Harbour, an area long since known for its plentiful sunshine, the ocean beach, an unbroken 11km of sand is enhanced by a breathtaking view out to White Island (Whakaari) and Whale Island (Moutohora), with sweeping views out towards the East Cape.

We are fortunate to have as our neighbours not only the maritime aspect, complete with slip-way and jetty, but the Ohope Beach Golf Course, Bird Sanctuary and Tauwhare Pa Site.

We have a bed for every budget. From our luxurious beach front apartments with stunning views over Ohope Beach, or our newly refurbished park motels, self contained units, kitchen cabins, standard cabins or one of our 400 tent sites.

Price range: \$NZ 20 - 310



Qualmark Rating

Address: 367 Harbour Road, Ohope Beach, Ohope

Phone: +64 +64 7 3124460

Fax: +64 +64 7 3126353

Email: enquiries@ohopebeach.co.nz

Website: www.ohopebeach.co.nz

[View Full Details](#)

Day 11 - 12 November 2010

TRAVELLING FROM WHAKATANE TO TAUPO

DRIVING DISTANCE: 156km / 97 miles

TRAVEL TIMES: By road - approximately 2 hours 13 minutes (by road)

By Air - approximately 1 hour 30 minutes (by air) + 9 minutes (by road)

Taupo

A city/town *in* the Lake Taupo Region

Beautiful Lake Taupo is actually a huge volcano with a fiery history. Its most recent eruption, in 181 AD, was large enough to change the sky as far away as Europe and China. According to Maori legend, the lake is the pulsating heart of Maui's fish (New Zealand's North Island). The lakeside town of Taupo provides a base for visitors who love to fish for trout, ski Mount Ruapehu and explore the local geothermal phenomena. Popular Taupo experiences include Huka Falls, geothermal walks, a prawn farm, lake cruises and guided kayak expeditions to see the rock carvings at Mine Bay. Most Taupo accommodation comes complete with a naturally heated spa pool.

Functional facts: Approx. population 21,040, i-SITE Visitor Centre, domestic airport.

I-SITES IN TAUPO

TAUPO I-SITE VISITOR CENTRE

Contact us first for information and bookings on what to see and do and where to stay in the Lake Taupo region.

Address: Tongariro Street, Taupo

Phone: +64 +64 7 3760027

Fax: +64 +64 7 3789003

Email: taupo@i-SITE.org

Website: www.laketauponz.com

HUKA FALLS

Scenic Highlights > Scenic Views *in* Taupo, Lake Taupo Region

At Huka Falls you can witness the phenomenon of natural hydro power - more than 220, 000 litres of water per second.

[View Full Details](#)

[i-SITE Visitor Centres in](#)



LAKE TAUPO

Scenic Highlights > Lakes *in* Taupo, Lake Taupo Region



Discover the amazing scenery around Lake Taupo. This area of New Zealand blends forests, geothermal activity and fascinating volcanic landscapes.

[View Full Details](#)
i-SITE Visitor Centres [in](#)

CRATERS OF THE MOON

Scenic Highlights > Natural Phenomena *in* Taupo, Lake Taupo Region



Explore a cratered valley that's hissing with clouds of steam. Feel the heat of the earth at the edge of the track, and peer from viewing platforms into cauldrons of boiling mud.

Contact: Taupo i-SITE Visitor Centre
Phone: +64 +64 7 3760027
Fax: +64 +64 7 3789003
Email: taupo@i-SITE.org
Website: www.laketauponz.com

[View Full Details](#)
Taupo i-SITE Visitor Centre

TRAVELLING FROM TAUPO TO OHAKUNE

DRIVING DISTANCE: 133km / 83 miles

TRAVEL TIMES: By road - approximately 1 hour 56 minutes (by road)
By Rail - approximately 25 minutes (by rail) + 1 hour 25 minutes (by road)

Ohakune

A city/town *in the* Ruapehu Region

First settled by the Ngati Rangi (Sky People) and Ngati Uenuku (Rainbow People), Ohakune is the southern gateway to the Tongariro National Park. The ski fields of Mount Ruapehu are close by, so the town is well-equipped with accommodation, restaurants and snow-related retailers. During the warmer months, Ohakune looks after those who come to hike and climb in the national park. Other local adventure activities include mountain biking, white water rafting, horse riding and canoeing. Ohakune is also known as a market gardening area. The 10 metre carrot that welcomes you to the town is unforgettable, and every year in early August there's a lively carrot festival.

Functional facts: Approx. population 1500, i-SITE Visitor Centre, train station.

I-SITES IN OHAKUNE

RUAPEHU I-SITE VISITOR INFORMATION CENTRE

Providing a Visitor Information Service for visitors to the Ruapehu Region. Our friendly staff will help you with booking accommodation and activities throughout New Zealand.

Address: 54 Clyde Street, Ohakune
Phone: +64 +64 6 3858427
Fax: +64 +64 6 3858527
Email: ruapehu@i-SITE.org
Website: www.visitruapehu.com

TRAVELLING FROM OHAKUNE TO WHAKAPAPA VILLAGE

DRIVING DISTANCE: 51km / 32 miles

TRAVEL TIMES: By road - approximately 45 minutes (by road)
 By Rail - approximately 25 minutes (by rail) + 14 minutes (by road)

Whakapapa Village

A city/town *in the Ruapehu Region*

Whakapapa Village is located at the base of the access road to Whakapapa ski field on the western side of Mount Ruapehu, an active volcano. The settlement is dominated by the elegant Chateau Tongariro, a large heritage hotel that was built in 1929. The village also offers less expensive accommodation, including camp sites. In winter, shuttle buses operate to and from the ski field, which has more than 30 runs, gear rental, ski schools, cafés and crèche facilities. Summer is a time for canoeing, white water rafting and hiking in the Tongariro National Park. Expeditions include the Tongariro Alpine Crossing, Tongariro Northern Circuit and the Crater Rim. Functional facts: Department of Conservation Visitor Centre, restaurants, limited shopping.

TONGARIRO NATIONAL PARK

Scenic Highlights > National Parks & Marine Reserves *in Whakapapa Village, Ruapehu Region*



Explore the volcanoes, lakes, rivers, alpine meadows and forests of New Zealand's first national park.

Contact: DOC Whakapapa Visitor Centre
Phone: +64 +64 7 8923729
Fax: +64 +64 7 8923814
Email: whakapapavc@doc.govt.nz
Website: www.doc.govt.nz/templates/PlaceProfile.aspx?id=38487

[View Full Details](#)
 Turangi i-SITE Visitor Centre

DAY 11 ACCOMMODATION

WHAKAPAPA HOLIDAY PARK

Accommodation > Holiday Parks *in Whakapapa Village, Ruapehu Region*



Set in native bush on majestic Mt Ruapehu in the heart of Tongariro National Park, when you arrive you will wonder what took you so long to get here!

Offering tent and campervan sites as well as standard and self contained cabins we also have a 32 bed backpackers lodge. Facilities include, kitchen, bathrooms, laundry, drying room and BBQ area. Dairy and activities booking office also on site.

Open all year round our friendly staff can help arrange Tongariro Crossing transfers, recommend local activities or just point you in the direction of

the nearest cold beer.

Price range: \$NZ 17 - 99

★★★★☆
 Qualmark Rating

Address: State Highway 48, Whakapapa Village
Phone: +64 +64 7 8923897
Fax: +64 +64 7 8923026
Email: whakapapaholpark@xtra.co.nz
Website: www.whakapapa.net.nz

[View Full Details](#)

Day 12 - 13 November 2010

TRAVELLING FROM WHAKAPAPA VILLAGE TO UPPER HUTT

DRIVING DISTANCE: 333km / 207 miles

TRAVEL TIMES:
 By road - approximately 4 hours 50 minutes (by road)
 By Air - approximately 55 minutes (by air) + 1 hour 55 minutes (by road)
 By Rail - approximately 6 hours 45 minutes (by rail) + 14 minutes (by road)

Upper Hutt

A city/town in the Wellington Region

One of the four cities that make up the Wellington region, Upper Hutt is set against forested hills alongside the Hutt River. Even though it flows through a city, the river is clean and clear enough for trout fishing. Activities in and around Upper Hutt focus on the beautiful outdoor environment. Many of the forest walkways are open to mountain bikers. The city is renowned for its parks and recreation areas, including an award-winning skate park, a wildlife park and a large aquatic fun centre. As you'd expect from a city of this size, there's plenty of accommodation, restaurants and shopping. Functional facts: Approx. population 36,660, i-SITE Visitor Centre, train station.

I-SITES IN UPPER HUTT

UPPER HUTT I-SITE VISITOR CENTRE

The one stop shop for bookings and information about what to see and do around Upper Hutt and throughout New Zealand.

Address: CBD Towers, 90 Main Street, Upper Hutt
Phone: +64 +64 4 5272141
Fax: +64 +64 4 5279818
Email: upperhutt@i-SITE.org
Website: www.upperhuttcity.com

KAITOKE REGIONAL PARK

Scenic Highlights > Parks & Reserves in Upper Hutt, Wellington Region



Pristine rainforest and crystal clear rivers create the magical elvish tranquility of this Lord of the Rings filming location.

Contact: Greater Wellington Regional Council
Phone: +64 +64 4 3845708
Fax: +64 +64 4 3856960
Website: www.gw.govt.nz/section402.cfm

[View Full Details](#)
 Upper Hutt i-SITE Visitor Centre

TRAVELLING FROM UPPER HUTT TO WELLINGTON

DRIVING DISTANCE: 32km / 20 miles

TRAVEL TIMES:
 By road - approximately 28 minutes (by road)
 By Rail - approximately 27 minutes (by rail)

Wellington

A city/town in the Wellington Region

Wellington is the political capital of New Zealand. The city is compact, cultured and full of character. Nestled between the harbour and the hills, the downtown area is ideal for explorations on foot - shopping, cafes, transport, accommodation and the city's major attractions are compressed into an area that's conveniently walkable.

Wellington's visitors come to browse museums, historic places and galleries, including the highly acclaimed national museum Te Papa. From a food and wine point of view, the city is truly delectable. Night time entertainment includes professional theatre, live concerts, comedy shows and dance performances.

Functional facts: Approx. population 205,500, i-SITE Visitor Centre, international and domestic airport.

I-SITES IN WELLINGTON

WELLINGTON I-SITE VISITOR CENTRE

What is your first port of call on a visit to Wellington? Easy -the Wellington i-SITE Visitor Centre.

Address: corner of Wakefield and Victoria Streets, Central City, Wellington

Phone: +64 +64 4 8024860

Email: info@wellingtonNZ.com

Website: www.wellingtonNZ.com

TE PAPA TOURS

Tour and Sightseeing > Guided Tours *in* Wellington, Wellington Region



Te Papa, New Zealand's bold and innovative national museum, is set in a breathtaking location on Wellington's beautiful waterfront. The museum has attracted nearly 16 million visitors since opening in 1998 and has established itself as a 'must see' on any visitor's itinerary.

There are six guided group tours that help bring the stories of New Zealand's land and people to life. A tour with an experienced, knowledgeable, and fun guide, adds depth to the experience, increases understanding and helps orient the first time visitor.

All tours can be tailored for special interests and multi-lingual guides are available on request. Intro tour departs hourly (10am to 3pm) through summer (Nov - Mar) and twice through winter (10.15am & 2pm).

Qualmark Endorsed
Visitor Activity

Address: 55 Cable Street, Wellington

Phone: +64 +64 4 3817111

Fax: +64 +64 4 3817170

Email: reservations@tepapa.govt.nz

Website: www.tepapa.govt.nz/TePapa/English/VisitingTePapa/Tours/

[View Full Details](#)

DAY 12 ACCOMMODATION

CAPITAL GATEWAY MOTOR INN

Accommodation > Holiday Parks *in* Wellington, Wellington Region



Capital Gateway Holiday Park is the closest Park to Wellington Capital City. Located just 5 minutes from the inter island ferries and city centre with easy access directly off State Highway 1. The address is 1 Newlands Road, Newlands, Wellington.

Regular public transport is available from the gate, travelling to and from the city.

The Park is fully self contained with shared kitchen facilities, lounge, showers, toilets and dump station. 27 powered campervan sites are available.

There is also an on site Restaurant and Bar with evening meals available seven days.

This is the best location to access and enjoy the many attractions of New Zealand's Capital City Wellington

Price range: \$NZ 35 - 50



Qualmark Rating

Address: 1 Newlands Road, Wellington

Phone: +64 +64 4 478 7812

Fax: +64 +64 04 478 1342

Email: capitalgateway@xtra.co.nz

Website: www.capitalgateway.co.nz

[View Full Details](#)

RED ROCKS RESERVE

Scenic Highlights > Natural Phenomena *in* Wellington, Wellington Region

Put half a day aside for this easy coastal walk to Red Rocks and a fur seal colony on the south side of Wellington.

Catch bus number 1 to Island Bay and get off at Reef Street

Contact: Department of Conservation

Phone: +64 +64 4 4727356

Fax: +64 +64 4 4712075

Email: wellingtonvc@doc.govt.nz

Website: www.doc.govt.nz



[View Full Details](#)
i-SITE Visitor Centres in

MOUNT VICTORIA

Scenic Highlights > Scenic Views in Wellington, Wellington Region



Breathtaking views and great walking tracks reward those who venture to the top of Mount Victoria.

[View Full Details](#)
i-SITE Visitor Centres in

Day 13 - 14 November 2010

TRAVELLING FROM WELLINGTON TO PICTON

DRIVING DISTANCE: 70km / 43 miles

TRAVEL TIMES: By ferry - approximately 3 hours 20 minutes (by ferry)
By Air - approximately 30 minutes (by air) + 14 minutes (by road)

Picton

A city/town in the Marlborough Region

The picturesque seaside town of Picton is the South Island base for the ferry service that links the main islands of New Zealand. It's also the gateway to the marine, forest and island attractions of the Marlborough Sounds. Built around a very sheltered harbour, the town has an attractive seafront dotted with cafés, restaurants and various types of galleries. There's also a floating maritime museum and an aquarium. Local operators can take you cruising, fishing, dolphin watching or sea kayaking. The Queen Charlotte Track is a major local attraction; you can conquer it on foot or on a mountain bike.

Functional facts: Approx. population 3600, i-SITE Visitor Centre, ferry services to and from the North Island.

I-SITES IN PICTON

PICTON I-SITE VISITOR CENTRE

Picton Visitor Information Centre on the Foreshore, for bookings, accommodation and adventures in Marlborough and the Sounds, land and ferry transport.

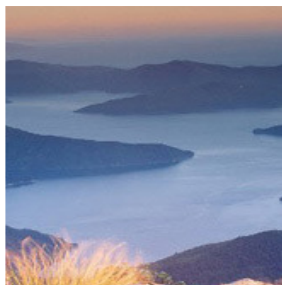
Address: The Foreshore, Picton
Phone: +64 +64 3 5203113
Fax: +64 +64 3 5735021
Email: picton@i-SITE.org
Website: www.destinationmarlborough.com

MARLBOROUGH SOUNDS

Scenic Highlights > Natural Phenomena in Picton, Marlborough Region

Enjoy long sheltered inlets, clear waters and sandy bays. Hike through the forest or kayak around the headlands to discover a fresh location each day.

Contact: Picton i-Site Visitor Centre
Phone: +64 +64 3 5203113



Fax: +64 +64 3 5735021
Email: picton@i-SITE.org
Website: www.destinationmarlborough.com

[View Full Details](#)
 Picton i-Site Visitor Centre

DAY 13 ACCOMMODATION

PICTON TOP 10 HOLIDAY PARK

Accommodation > Holiday Parks *in* Picton, Marlborough Region



At Picton Top 10 Holiday Park, you'll find a relaxed tranquil environment, backed up with the facilities that you need to take the hassle out of your holiday. Choose from a full range of accommodation options including tent and powered campervan & caravan sites, comfortable cabins, and fully serviced tourist flats. With close proximity to the shops and marina you've got easy access to popular activities such as the Queen Charlotte Walkway and sea kayaking. Plus our friendly staff are only too happy to recommend adventures or local attractions that are worth a visit. We guarantee we'll do our best to make your

Price range: \$NZ 16 - 170

★★★★★
 Qualmark Rating

Address: 78 Waikawa Road, Picton
Phone: +64 +64 3 5737212
Fax: +64 +64 3 5737912
Email: enquiries@picrontop10.co.nz
Website: www.picrontop10.co.nz

[View Full Details](#)

stay an enjoyable one!

Day 14 - 15 November 2010

TRAVELLING FROM PICTON TO BLENHEIM

DRIVING DISTANCE: 28km / 17 miles
TRAVEL TIMES: By road - approximately 24 minutes (by road)
 By Rail - approximately 30 minutes (by rail)

Blenheim

A city/town *in* the Marlborough Region

Blenheim is situated in the heart of wine-growing Marlborough. It is one of the sunniest towns in New Zealand, with an estimated average of 2,438 hours of sunshine a year. Mountains frame the area and trap the summer heat (temperatures over 30°C are quite normal in February and March). In and around Blenheim you'll find a pleasing selection of cafes, restaurants, bars, shops, artisan food outlets and golf courses. There are more than 20 wineries within driving distance of the town, and most of them welcome visitors for sampling sessions and cellar door sales. Character accommodation is a Blenheim speciality.

Functional facts: Approx. population 26,500, i-SITE Visitor Centre, domestic airport.

I-SITES IN BLENHEIM

BLENHEIM I-SITE VISITOR CENTRE

Blenheim i-SITE staff located in the historic Railway Station can arrange all your bookings for activities, accommodation and transportation to ensure that your Marlborough stay is a memorable one.

Address: Railway Station, Sinclair Street, Blenheim
Phone: +64 +64 3 5778080
Fax: +64 +64 3 5778079
Email: blenheim@i-SITE.org
Website: www.destinationmarlborough.com

BLENHEIM DIVE CENTRE

Activity > Water Activities > Diving in Blenheim, Marlborough Region



Blenheim Dive Centre is located at the 'Top of the South island' with the Marlborough Sounds at our doorstep. We offer a wide range of diving experiences.

Explore the wreck of the "Mikhail Lermontov" - the pride of the Russian cruise fleet which sunk in February 1986. Reputed to be the third largest divisible wreck in the world behind the President Coolidge and Titanic.

"KOI" and "Vara" a twin wreck dive suitable for entry level divers.

Cray fish and scallop dives for those divers keen

on food gathering.

All levels of training through to assistant instructor are offered by our professional training team.

Blenheim Dive Centre is a family run business which has been owned and operated by the same family for over twenty years.

Address: 9 Scott Street, Blenheim

Phone: +64 +64 3 5780331

Fax: +64 +64 3 5776066

Email: bdc@xtra.co.nz

Website: www.blenheimdive.co.nz

[View Full Details](#)

Day 15 - 16 November 2010

BLENHEIM DIVE CENTRE

Activity > Water Activities > Diving in Blenheim, Marlborough Region



Blenheim Dive Centre is located at the 'Top of the South island' with the Marlborough Sounds at our doorstep. We offer a wide range of diving experiences.

Explore the wreck of the "Mikhail Lermontov" - the pride of the Russian cruise fleet which sunk in February 1986. Reputed to be the third largest divisible wreck in the world behind the President Coolidge and Titanic.

"KOI" and "Vara" a twin wreck dive suitable for entry level divers.

Cray fish and scallop dives for those divers keen

on food gathering.

All levels of training through to assistant instructor are offered by our professional training team.

Blenheim Dive Centre is a family run business which has been owned and operated by the same family for over twenty years.

Address: 9 Scott Street, Blenheim

Phone: +64 +64 3 5780331

Fax: +64 +64 3 5776066

Email: bdc@xtra.co.nz

Website: www.blenheimdive.co.nz

[View Full Details](#)

Day 16 - 17 November 2010

TRAVELLING FROM BLENHEIM TO NELSON

DRIVING DISTANCE: 113km / 70 miles

TRAVEL TIMES: By road - approximately 1 hour 29 minutes (by road)
By Air - approximately 1 hour (by air) + 11 minutes (by road)

Nelson

A city/town in the Nelson Region

Nelson is an entertaining city in many ways. From a cultural point of view, it provides the chance to appreciate New Zealand art, both in galleries and in artists' studios. The district has attracted creative people who work with glass, metal, stone, wood, clay,

sand, paper, ink, paint and fabric. Nelson is also appealing from a lifestyle point of view. There are wineries scattered around the Moutere Hills and the Waimea Plains. In the city, you'll find a good selection of restaurants – some with huge views of Tasman Bay. Activities include skydiving, rock climbing, 4WD biking, horse treks, sailing charters and water fun at the excellent beaches.

Functional facts: Approx. population 52,300, i-SITE Visitor Centre, domestic airport.

I-SITES IN NELSON

NELSON I-SITE VISITOR CENTRE

Nelson i-SITE is your one-stop travel shop. We provide impartial comprehensive information and bookings on Nelson and New Zealand for activities, transport, and accommodation.

Address: Corner Trafalgar & Halifax Streets, Nelson

Phone: +64 +64 3 5482304

Fax: +64 +64 3 5467393

Email: Nelson@i-SITE.org

Website: www.i-SITENelsonNZ.com

OKIWI BAY HOLIDAY PARK & LODGE

Activity > Water Activities > Diving in Nelson, Nelson Region



Qualified divers with their own BCD, wetsuit, regulator, fins, & mask can hire scuba tanks and weight belts if required and go diving from our 6m Stabicraft.

The boat operates under SOP with a maximum of 6 divers per trip. Cray and scallops can be gathered in season and scenic dives are available any time. Spearfishing trips are also available.

All trips focus on Croisilles Harbour to the Southern end of D'Urville Island. There is an extensive section of rocky shoreline with caves, crannies and some deeper dives around the

pinacles.

Gear wash down facilities and NZU pure air station on site along with accommodation for up to 12 people in a group.

Address: 15 Renata Road, Okiwi Bay

Phone: +64 +64 3 5765006

Fax: +64 +64 3 5765005

Email: info@okiwi.co.nz

Website: www.okiwi.co.nz

[View Full Details](#)

TRAVELLING FROM NELSON TO KAITERITERI

DRIVING DISTANCE: 61km / 38 miles

TRAVEL TIMES: By road - approximately 54 minutes (by road)

Kaiteriteri

A city/town in the Nelson Region

This attractive beach town is 13 kilometres from Motueka and handy to the Abel Tasman National Park. Known for its beautiful golden sand (made of quartz and mica particles) and clear blue-green water, Kaiteriteri has a motor camp, motels, a general store and a choice of places to eat (check out the seafood). Local hikes include Withells Walk and Kaka Pah Point. From Kaiteriteri you can catch a water taxi or tour into the Abel Tasman National Park; you can also hire kayaks or arrange to go seal swimming. It's often possible to rent a private beach house if you're planning to stay for more than a few days. Functional facts: Approx. population 870, limited shopping.

ABEL TASMAN NATIONAL PARK

Scenic Highlights > National Parks & Marine Reserves in Kaiteriteri, Nelson Region

Abel Tasman National Park is famous for its golden beaches, turquoise waters and sculptured granite rock forms.

Contact: DOC Nelson Regional Visitor Centre

Phone: +64 +64 3 5469339

Website: www.doc.govt.nz/templates/PlaceProfile.aspx?id=38455

[View Full Details](#)

Motueka i-SITE Visitor Centre



TRAVELLING FROM KAITERITERI TO TAKAKA

DRIVING DISTANCE: 64km / 40 miles
TRAVEL TIMES: By road - approximately 56 minutes (by road)

Takaka

A city/town in the Nelson Region

Takaka is located at the south eastern end of Golden Bay in the Nelson region. With a community that includes many alternative lifestylers, it's a town full of character. There's a small museum, a movie theatre and a great choice of shops and cafés. The town also offers plenty of value-for-money accommodation, including backpacker lodges, B & Bs and homestays. If you're planning to hike in Kahurangi National Park, Takaka is a good place to take on essential supplies. Other nearby attractions include Waikoropupu Springs, the largest freshwater springs in New Zealand, and an art trail that will reveal the region's creativity. Functional facts: Approx. population 1230, good range of shops and services, i-SITE Visitor Centre.

I-SITES IN TAKAKA

GOLDEN BAY I-SITE VISITOR CENTRE

Information provision, accommodation, activities and travel bookings

Address: Willow Street, Golden Bay, Takaka
Phone: +64 +64 3 5259136
Fax: +64 +64 3 5259288
Email: goldenbay@i-SITE.org
Website: www.nelsonnz.com

LORD OF THE RINGS FILMING SITES

Scenic Highlights > Scenic Views in Takaka, Nelson Region



Looking at Nelson from a Lord of the Rings point of view will lead you to some fantastic faraway places.

Contact: Motueka i-SITE Visitor Centre
Phone: +64 +64 3 5286543
Fax: +64 +64 3 5286563
Email: info@motuekaisite.co.nz
Website: www.motuekaisite.co.nz

[View Full Details](#)
 Motueka i-SITE Visitor Centre

TRAVELLING FROM TAKAKA TO MOTUEKA

DRIVING DISTANCE: 68km / 42 miles
TRAVEL TIMES: By road - approximately 59 minutes (by road)

Motueka

A city/town in the Nelson Region

Over the harvest months, Motueka is a busy town. The local pip fruit and hops growers employ seasonal labour which swells the population, and many visitors use the town as a supply point for explorations of the Abel Tasman and Kahurangi National Parks. The town has a small museum and there's no shortage of interesting places to eat – you can even dine in a converted church in the main street. Motueka also has a lively artistic community, so the craft and art galleries are worth a look. Take a stroll along the waterfront walkway or drive to the Riwaka Resurgence, where the river emerges from a marble cave.

Functional facts: Approx. population 6600, visitors centre, good range of shops and services.



I-SITES IN MOTUEKA

MOTUEKA I-SITE VISITOR CENTRE

For accommodation, activity and travel bookings contact the Motueka Information Centre, Wallace Street, Motueka.

Address: Wallace Street, Motueka
Phone: +64 +64 3 5286543
Fax: +64 +64 3 5286563
Email: info@motuekaisite.co.nz
Website: www.motuekaisite.co.nz

Qualmark Endorsed
 Visitor Activity

Address: 265 High Street, Motueka
Phone: +64 +64 3 5282027
Fax: +64 +64 3 5282029
Email: info@abeltasman.co.nz
Website: www.AbelTasman.co.nz

[View Full Details](#)

ABEL TASMAN WILSON'S EXPERIENCES

[Tour and Sightseeing > Guided Tours in Motueka, Nelson Region](#)



Welcoming visitors since 1841 we know how to take care of the details. If you have 2 hours or a few days, we help you make the most of each day with speedy, comfortable water transport, and the only overnight trips staying in Beachfront Lodges within the Park: Torrent Bay Lodge and Meadowbank Homestead – Awaroa. In one day, choose from 2 to 9 hours in the Park. Take a boat cruise, relax on a golden beach, or take a bush/beach walk from 30 minutes to 6 hours. All-inclusive overnight stays in twin/double ensuite room. Meals of fresh local specialities. Expert Guides help you find the balance between relaxed

solitude and safe, friendly adventure. All you have to do is get to Nelson, Motueka or Kaiteriteri. We take care of you from there.

KAHURANGI NATIONAL PARK

[Scenic Highlights > National Parks & Marine Reserves in Motueka, Nelson Region](#)



Huge and wild, Kahurangi National Park will surprise you with tropical palm forests, caves, alpine herbfields and rare creatures.

Contact: DOC Nelson Regional Visitor Centre
Phone: +64 +64 3 5469339
Website: www.doc.govt.nz/templates/PlaceProfile.aspx?id=38413

[View Full Details](#)

Motueka i-SITE Visitor Centre

DAY 16 ACCOMMODATION

MOTUEKA TOP 10 HOLIDAY PARK

[Accommodation > Holiday Parks in Motueka, Nelson Region](#)



Relax in our peaceful bush setting, only 300 metres to shops, cafes, restaurants and supermarkets.

Excellent communal facilities including kitchens, family bathrooms, toilet and showers, coin operated laundry, free gas BBQ's, TV room with internet access (wireless available), children's playground with jumping pillow, fun bikes, giant chess set, spa and heated swimming pool.

Booking agent for local attractions and Abel Tasman National Park. Vehicle and luggage storage. Studio, one & two bedroom park motels,

kitchen cabins, standard cabins, large grassy sites for campervans, caravans and tents.

Price range: \$NZ 40 - 150

★★★★★
 Qualmark Rating

Address: 10 Fearon St, Motueka
Phone: +64 +64 3 5287189
Fax: +64 +64 3 5287182
Email: info@motuekatop10.co.nz
Website: www.motuekatop10.co.nz

[View Full Details](#)

Day 17 - 18 November 2010

TRAVELLING FROM MOTUEKA TO KAIKOURA

DRIVING DISTANCE: 288km / 179 miles
TRAVEL TIMES: By road - approximately 4 hours 1 minute (by road)
 By Air - approximately 1 hour 20 minutes (by air) + 40 minutes (by road)
 By Rail - approximately 2 hours 38 minutes (by rail) + 2 hours 10 minutes (by road)

Kaikoura

A city/town *in the* Christchurch - Canterbury Region

Kaikoura is a base for wildlife experiences of all kinds – it's also a great place to eat crayfish (in the Maori language kai means food, koura means crayfish). The environment is truly spectacular – the village is caught between the rugged Seaward Kaikoura Range and the Pacific Ocean. In winter the mountains are covered with snow, adding to the drama of the landscape. Kaikoura's special talent is marine mammal encounters – whales, fur seals and dolphins live permanently in the coastal waters. Whale watching trips leave the town several times a day and the local seal colony is always entertaining. There are plenty of cafés, restaurants and shops. Functional facts: Approx. population 3800, i-SITE Visitor Centre, train station.

I-SITES IN KAIKOURA

KAIKOURA I-SITE VISITOR CENTRE

The Centre has been operating for 19 years and is the focal point in Kaikoura (population 3,800) for tourists and visitors who require information and booking services.

Address: West End, Kaikoura
Phone: +64 +64 3 3195641
Fax: +64 +64 3 3196819
Email: kaikoura@i-SITE.org
Website: www.kaikoura.co.nz

ALBATROSS ENCOUNTER

Activity > Wildlife Encounters > Bird Watching *in* Kaikoura, Christchurch - Canterbury Region



photo opportunities.

Kaikoura has a greater variety of seabird species within a small area than anywhere along the New Zealand coastline. It is Kaikoura's proximity to the deep ocean canyon systems which is largely responsible for providing the abundant wildlife which has led to Kaikoura becoming a "must visit" destination.

A large array of seabirds can be found within easy reach of our shores with rare and endangered species of birds readily observed. The Albatross Encounter enables you to be within very close proximity to the birds, allowing for some fantastic

Qualmark Endorsed
Visitor Activity

Address: 96 Esplanade, Kaikoura
Phone: +64 +64 3 3196777
Fax: +64 +64 3 3196534
Email: info@oceanwings.co.nz
Website: www.albatrossencounter.co.nz

[View Full Details](#)

WHALE WATCH KAIKOURA LTD

Activity > Wildlife Encounters > Whale Watching *in* Kaikoura, Christchurch - Canterbury Region



Share in the most breathtaking adventure of a lifetime. Enter the world of one of nature's most magnificent mammals - the giant sperm whale.

Meet this awesome creature in its natural environment with dusky dolphins, sea birds, fur seals and the migratory species of whale that frequent the Kaikoura coastline. Whale Watch is a multiple award winning nature tourism company, owned and operated by the indigenous Kati Kuri people of Kaikoura.

Tours operate daily depending on the season and due to high demand, advance booking is essential.

Qualmark Endorsed
Visitor Activity

Address: Whaleway Station Road, Kaikoura
Phone: +64 +64 3 3196767
Fax: +64 +64 3 3196545
Email: res@whalewatch.co.nz
Website: www.whalewatch.co.nz

[View Full Details](#)

DAY 17 ACCOMMODATION

 **ALPINE-PACIFIC HOLIDAY PARK**

Accommodation > Holiday Parks *in* Kaikoura, Christchurch - Canterbury Region



Modern holiday park, with full range of accommodation and facilities, heated swimming pool, two spa pools, SKY TV. From tent sites, powered sites, standard cabins, ensuite units, studio motels to large two bedroomed motels - accommodation for every budget.

Our amenities have awesome hot powerful showers, are clean and well appointed. The location of the park is 400 metres north of town close to Whale Watch, cafes, supermarket and service stations but very quiet, with fantastic mountain views.

BBQ's and bike hire, re-cycling facilities.

Qualmark 4 star plus rated.

Price range: \$NZ 16 - 140



Qualmark Rating

Address: 69 Beach Road, Kaikoura

Phone: +64 +64 3 3196275

Fax: +64 +64 3 3196275

Email: info@alpine-pacific.co.nz

Website: www.alpine-pacific.co.nz

[View Full Details](#)

 **THE WILDLIFE OF KAIKOURA**

Scenic Highlights > Coastal Highlights *in* Kaikoura, Christchurch - Canterbury Region



The Shoreline Walk from Point Kean leads you to colonies of fur seals and sea birds. Pack a picnic and a camera.

[View Full Details](#)

i-SITE Visitor Centres *in*

Day 18 - 19 November 2010

TRAVELLING FROM KAIKOURA TO GREYMOUTH

DRIVING DISTANCE: 330km / 205 miles

TRAVEL TIMES: By road - approximately 4 hours 47 minutes (by road)

By Air - approximately 2 hours 5 minutes (by air) + 6 minutes (by road)

By Rail - approximately 7 hours 22 minutes (by rail)

 **Greymouth**

A city/town *in* the West Coast Region

Once the site of the Maori pa Mawhera (which means 'wide spread river mouth', in reference to the town's river mouth location), Greymouth is the largest town on the South Island's west coast. The area has a history of gold mining, which can be appreciated at the local museum and nearby Shantytown. The local brewery is something of a New Zealand legend; it runs tours that include a tasting session. Other Greymouth entertainments include sea fishing, fly fishing, a quayside walk and hiking the Elizabeth Track, which passes through a scenic reserve and old goldmining sites. Around the town you'll find galleries specialising in pounamu (New Zealand jade).
Functional facts: Approx. population 13,500, i-SITE Visitor Centre, train station.

I-SITES IN GREYMOUTH

GREYMOUTH I-SITE VISITOR CENTRE

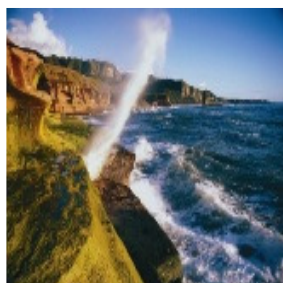
Visitor Information Centre, situated in the centre of Greymouth. Able to assist with all enquires for the Grey District, which covers: Greymouth, Lake Brunner & Moana, Blackball and New Zealand.

Address: cnr Herbert & Mackay Street, Greymouth

Phone: +64 +64 3 7685101
Fax: +64 +64 3 7680317
Email: greymouth@i-SITE.org
Website: www.greymouth.co.nz

PUNAKAIKI PANCAKE ROCKS AND BLOWHOLES

Scenic Highlights > Natural Phenomena *in* Greymouth, West Coast Region



Gaze in wonder at nature's artistry as columns of water shoot skyward from rocks that resemble giant stacks of pancakes.

[View Full Details](#)
 i-SITE Visitor Centres *in*

DAY 18 ACCOMMODATION

GREYMOUTH SEASIDE TOP 10 HOILDAY PARK

Accommodation > Holiday Parks *in* Greymouth, West Coast Region



Greymouth Seaside Top 10 Holiday Park, is one of the prestigious Top 10 Group of Parks which pride themselves on quality accommodation, sites and service. It caters for a wide range of visitors, who come to visit Greymouth and its environs to experience for themselves the scenery and activities to take them closer to nature.

Look for the signs - 2.5kms south of Town Centre on Main South Road.

Price range: \$NZ 18 - 130

★★★★★
 Qualmark Rating

Address: 2 Chesterfield Street, Greymouth

Phone: +64 +64 3 7686618

Fax: +64 +64 3 7685873

Email: info@top10greymouth.co.nz

Website: www.top10greymouth.co.nz

[View Full Details](#)

Day 19 - 20 November 2010

TRAVELLING FROM GREYMOUTH TO FRANZ JOSEF

DRIVING DISTANCE: 180km / 112 miles

TRAVEL TIMES: By road - approximately 2 hours 36 minutes (by road)

Franz Josef

A city/town *in the* West Coast Region

Franz Josef Glacier was first explored in 1865 by geologist Julius von Haast, who named it after the Austrian emperor. The glacier is five kilometres from the town of the same name, and a 20 minute walk will take you to its terminal face. From the glacier car park, you can hike to a choice of lookout points for a bigger view of this awesome river of ice. If you want to actually make contact with the glacier, take a guided ice walk or a heli-hike. Aerial sightseeing is another option. In the town you'll find plenty of places to stay and eat. At nearby Lake Mapourika there are kayaks for hire.

Functional facts: Approx. population 320, Department of Conservation Visitor Centre, fuel.

I-SITES IN FRANZ JOSEF

FRANZ JOSEF I-SITE VISITOR CENTRE - DOC WESTLAND TAI POUTINI NATIONAL PARK VISITOR CENTRE & I-SITE

Curious about walks, what to do and see? Just ask us. Maps and brochures available. Discover the glaciers, find out why it rains so much, learn about our wildlife. Booking service available.

Address: Main Road, Franz Josef Glacier
Phone: +64 +64 3 7520796
Fax: +64 +64 3 7520797
Email: westlandnpvc@doc.govt.nz
Website: www.doc.govt.nz

FRANZ JOSEF HELI HIKE

Activity > Land Activities > Walking/Trekking in Franz Josef, West Coast Region



Discover up close the magnificent West Coast glaciers. Combine an awesome scenic helicopter flight over Franz Josef Glacier with a guided walk among ice caves, pinnacles and seracs of this pristine alpine environment.

Experienced & professional, the helicopter pilots informative commentary will showcase the exciting landscape. You'll see extraordinary colours of the ice-flow from above, then up close on an unforgettable guided hike amongst the glacier ice formations.

Franz Josef Glacier guides will take you on a two hour ice exploration. Allow three hours for this discovery trip, average fitness is required. For those less energetic, an alternative is a scenic helicopter flight over the Franz Josef Glacier to explore and discover.

Qualmark Endorsed
Visitor Activity

Address: Main South Road, SH6, Franz Josef Glacier
Phone: +64 +64 3 752 0767
Fax: +64 +64 3 752 0769
Email: franz@helicopter.co.nz
Website: www.helicopter.co.nz

[View Full Details](#)

WESTLAND TAI POUTINI NATIONAL PARK

Scenic Highlights > National Parks & Marine Reserves in Franz Josef, West Coast Region



Release your inner explorer in a pristine national park that offers a wide selection of tempting terrain.

Contact: DOC Tai Poutini National Park Visitor Centre
Phone: +64 +64 3 7520796
Fax: +64 +64 3 7520797
Email: westlandnpvc@doc.govt.nz
Website: www.doc.govt.nz/templates/PlaceProfile.aspx?id=38501

[View Full Details](#)

[i-SITE Visitor Centres in](#)

TRAVELLING FROM FRANZ JOSEF TO FOX GLACIER

DRIVING DISTANCE: 23km / 14 miles

TRAVEL TIMES: By road - approximately 20 minutes (by road)

Fox Glacier

A city/town in the West Coast Region

Named after Sir William Fox, New Zealand's Prime Minister from 1869 to 1872, Fox Glacier describes both the glacier and the nearby village. Like its twin, Franz Josef, the glacier descends from the Southern Alps down into temperate rainforest just 300 metres above sea level. To see the glacier, you can walk to the terminal face, arrange an ice-hiking adventure or book a sightseeing flight. There are glow worm caves just a short walk from the town centre, which offers a good choice of cafes and restaurants. Close to Fox Glacier is beautiful Lake Matheson, one of the most photographed lakes in New Zealand (on a clear day it reflects Mount Cook).
 Functional facts: Approx. population 280, Department of Conservation Visitor Centre, fuel.

DAY 19 ACCOMMODATION

 **FOX GLACIER HOLIDAY PARK**

Accommodation > Holiday Parks *in* Fox Glacier, West Coast Region



Fox Glacier Holiday Park is located in a quiet setting with spectacular mountain views, and just minutes from the Fox Glacier Township. Ideal for individuals, families and groups, the park has spacious sites for tents, powered sites for campervans, a 14 room lodge, standard cabins, bunkhouse cabins and self contained units, park motels.

Children's Playground, wireless and coin operated internet.

All trip activities can be arranged at the office for glacier walks, heli flights over mountains and

glaciers, and sky diving.

Experience the magic of Fox Glacier while staying with our friendly and helpful team.

Please visit our website for more information.

Price range: \$NZ 14 - 190



Qualmark Rating

Address: Kerrs Rd, Fox Glacier

Phone: +64 +64 3 7510821

Fax: +64 +64 3 7510813

Email: info@foxglacierholidaypark.co.nz

Website: foxglacierholidaypark.co.nz

[View Full Details](#)

 **FOX GLACIER GUIDING**

Tour and Sightseeing > Guided Tours *in* Fox Glacier, West Coast Region



Enjoy a breathtaking guided trip on the West Coast's longest and less crowded glacier amidst fascinating ice formations with New Zealand's most experienced glacier guiding company. To assure your safety our guides are trained through the internationally recognized NZ Mountain Guides Association. Let our friendly and professional guides lead you on to an incredible world of ice. We offer trips to suit all fitness levels, budgets and timeframes; from half a day to 2 days duration. Contact our helpful sales staff for more information.

Qualmark Endorsed
Visitor Activity

Address: Main Road, Fox Glacier

Phone: +64 +64 3 7510825

Fax: +64 +64 3 7510857

Email: info@foxguides.co.nz

Website: www.foxguides.co.nz

[View Full Details](#)

TRAVELLING FROM FOX GLACIER TO HAAST

DRIVING DISTANCE: 117km / 73 miles

TRAVEL TIMES: By road - approximately 1 hour 42 minutes (by road)

 **Haast**

A city/town *in the* West Coast Region

Named for German geologist Julius von Haast, the Haast area includes three settlements - Haast Junction, Haast Beach and Haast itself. You get the feeling you're on the edge of the frontier - helicopters fly deer hunters into the rugged ranges and local pubs make a feature of mounted animal heads. The surrounding World Heritage Area is the main attraction here. Everywhere you look, Westland rainforest tumbles across the landscape. Haast entertainments include river safaris, visits to fur seal and penguin colonies, sea fishing, trout fishing, hunting and the drive to Jackson Bay, one of the most remote villages in New Zealand.

Functional facts: Approx. population 300, Department of Conservation Visitor Centre, limited shopping.

HAAST RIVER SAFARI

Activity > Water Activities > Boat Cruises *in Haast, West Coast Region*



Award winning Haast River Safari offers a scenic cruise through the spectacular Haast River Valley into the heart of "Te Wahipounamu" - the South West World Heritage Area. Our innovative safari-craft are fully enclosed and easily accessible giving passengers of all ages a unique river experience while remaining warm and dry. Our friendly driver-guides are highly experienced and their local knowledge opens a window into both the awesome geological history, and fascinating cultural history of the area. One hour, one way tours for coach groups, plus scheduled return trips for the independent traveller.

Qualmark Endorsed
Visitor Activity

Address: Red Barn, Highway 6, Haast

Phone: +64 +64 3 7500101

Fax: +64 +64 3 7500181

Email: info@haastriver.co.nz

Website: www.haastriver.co.nz

[View Full Details](#)

HAAST LODGE

Accommodation > Holiday Parks *in Haast, West Coast Region*



Motor park and backpackers located halfway between Queenstown and the Glaciers. We offer power points sites and budget rooms along with a large communal kitchen and lounge, clean showers.

Located in the township within walking distance to: restaurants, cafe, supermarket and jade and possum fur shops.

Short drive to scenic beach and forest walks.

Price range: \$NZ 16 - 60

Address: 1 Mark's Road, Haast Township, Haast

Phone: +64 +64 3 750 0703

Fax: +64 +64 3 750 0718

Email: info@haastlodge.com

Website: www.haastlodge.com

[View Full Details](#)

Day 20 - *21 November 2010*

TRAVELLING FROM HAAST TO ARROWTOWN

DRIVING DISTANCE: 201km / 125 miles

TRAVEL TIMES: By road - approximately 2 hours 54 minutes (by road)

Arrowtown

A city/town *in the Queenstown Region*

One of the most picturesque settlements in New Zealand, Arrowtown sits alongside the Arrow River – once the scene of a frantic gold rush. The town retains its historic character – there are more than 60 restored buildings from the 19th century. The gold days are long over (although you can still pan for gold in the river with some success), so Arrowtown's focus is on hosting visitors. Explore the Chinese miners' settlement, visit the Lake District Museum, catch a few holes at the challenging local golf course or take a 4WD journey to Macetown, a ghost town accessible only by wagon track. Arrowtown has a range of cafes, restaurants and appealing shops. Functional facts: Approx. population 1700, information centre, fuel.

WAITIRI CREEK WINES LTD.

Activity > Arts, Culture and Heritage > Wineries *in Arrowtown, Queenstown Region*

Waitiri Creek Wines was established in 1993 by Alistair Ward, Paula Ramage and the Ward family.

Qualmark Endorsed
Visitor Activity

Address: Rapid 2323, Church Lane, State Highway 6, Gibbston

Phone: +64 +64 3 4413315



Shanagolden Block at Gibbston.

"Waitiri" roughly translates from Maori as "thundering water". Both our Gibbston vineyards are situated above the Kawarau River which boasts some impressive rapids.

Since our first vintage in 1998, we have forged a consistent record of awards at New Zealand wine competitions across our entire range. Our grapes are hand-picked from almost 20 hectares of vineyards in Gibbston and at Bannockburn.

In 2000, we were fortunate to purchase the Wangaloa Presbyterian Church from South Otago. Built in 1893, as our cellar door and café on the

Fax: +64 +64 3 4413316
Email: info@waitiricreek.co.nz
Website: www.waitiricreek.co.nz

[View Full Details](#)

TRAVELLING FROM ARROWTOWN TO QUEENSTOWN

DRIVING DISTANCE: 24km / 15 miles

TRAVEL TIMES: By road - approximately 20 minutes (by road)

Queenstown

A city/town *in the* Queenstown Region

The resort town of Queenstown is sophisticated and fantastically scenic. Its lake and mountain landscape is suited to almost any kind of adventure; but Queenstown is just as well known as a place for indulgence. The area's history is intertwined with gold. In 1862, two sheep shearers struck it rich at the edge of the Shotover River. The ensuing gold rush town was named Queenstown because '...it was fit for Queen Victoria'. Adventure activities include snow sports, bungy jumping, jet boating, horse trekking and river rafting. Indulgent experiences include exceptional food and wine, lake cruises, spa treatments, boutique shopping and leisurely games of golf. Functional facts: Approx. population 7500, i-SITE Visitor Centre, domestic airport.

I-SITES IN QUEENSTOWN

QUEENSTOWN I-SITE VISITOR CENTRE

Our qualified Travel & Information Consultants can help you plan & book your activities, accommodation or transport throughout New Zealand.

Address: Clocktower Building, Cnr Shotover & Camp Street, Queenstown
Phone: +64 +64 3 442 4100
Freephone: +64 0800 668 888
Fax: +64 +64 3 442 8907
Email: info@qvc.co.nz
Website: www.queenstown-vacation.com

LAKE WAKATIPU

Scenic Highlights > Lakes *in* Queenstown, Queenstown Region



Cruising across Lake Wakatipu on a restored paddlesteamer is a blissful way to appreciate the magnificent alpine scenery.

Contact: Queenstown i-SITE Visitor Centre
Phone: +64 +64 3 442 4100
Fax: +64 +64 3 442 8907
Email: info@qvc.co.nz
Website: www.queenstown-vacation.com

[View Full Details](#)

Queenstown i-SITE Visitor Centre

DAY 20 ACCOMMODATION

SHOTOVER TOP 10 HOLIDAY PARK

Accommodation > Holiday Parks *in* Queenstown, Queenstown Region



Shotover Top 10 Holiday Park is a member of New Zealand's premier Top 10 Holiday Park chain. Located just five minutes from Queenstown in a quiet park setting close to the Shotover River.

The park is family owned/operated and includes park motels, self-contained units, campervan sites and lodges.

With upgraded facilities our budget accommodation is the perfect way to stick to your budget without compromising the quality of your Queenstown accommodation.

The local area lends itself to numerous outdoor activities including skiing, walking, mountain biking, golf, & horse riding.

Come and check it out. You won't be disappointed. Enjoy the great company, explore our awesome places and experience the best activities.

Price range: \$NZ 16 - 160



Qualmark Rating

Address: 70 Arthurs Point Road, Arthurs Point, Queenstown

Phone: +64 +64 3 4429306

Fax: +64 +64 3 4429307

Email: stay@shotoverholidaypark.co.nz

Website: www.shotoverholidaypark.co.nz

[View Full Details](#)



SKIPPERS ROAD

[Scenic Highlights](#) > [History & Culture](#) *in* Queenstown, Queenstown Region



High above the raging Shotover River, Skippers Road creeps along the face of Skippers Canyon. Don't look down!

Contact: Queenstown i-SITE Visitor Centre

Phone: +64 +64 3 442 4100

Fax: +64 +64 3 442 8907

Email: info@qvc.co.nz

Website: www.queenstown-vacation.com

[View Full Details](#)

Queenstown i-SITE Visitor Centre

Day 21 - 22 November 2010

TRAVELLING FROM QUEENSTOWN TO MILFORD SOUND

DRIVING DISTANCE: 290km / 180 miles

TRAVEL TIMES: By road - approximately 4 hours 13 minutes (by road)



Milford Sound

A city/town *in* the Fiordland Region

Milford Sound the settlement exists solely to look after travellers who come to see Milford Sound the fiord. Facilities and services are limited - you'll find a café and a tavern. Most activity is centred around the wharf, because cruises on Milford Sound are hugely popular (food is available on board). Flightseeing and sea kayaking are two other ways to immerse yourself in the grandeur of huge peaks, waterfalls and sheer rock faces. At the underwater observatory, you can enjoy the unusual scenery that exists below the water. The Milford Track, which begins at the northern end of Lake Te Anau, finishes with a ferry trip from Sandfly Point to the Milford Sound wharf. Functional facts: Approx. population 140, one backpacker accommodation provider, airport.



MILFORD SOUND

[Scenic Highlights](#) > [Natural Phenomena](#) *in* Milford Sound, Fiordland Region

When it rains in Milford Sound, and it often does, dozens of 'temporary waterfalls' cascade down the cliff faces, some as long as 1000 metres.

Contact: Fiordland i-SITE Visitor Centre

Phone: +64 +64 3 2498900

Fax: +64 +64 3 2497022

Email: fiordland@i-SITE.org



[View Full Details](#)
Fiordland i-SITE Visitor Centre

FIORDLAND NATIONAL PARK

Scenic Highlights > National Parks & Marine Reserves in Milford Sound, Fiordland Region



This remarkable natural environment features dramatic fiords, spectacular waterfalls and snow-capped peaks.

Contact: DOC Fiordland Visitor Centre
Phone: +64 3 2497924
Email: fiordlandvc@doc.govt.nz
Website: www.doc.govt.nz/templates/PlaceProfile.aspx?id=38468

[View Full Details](#)
Fiordland i-SITE Visitor Centre

TRAVELLING FROM MILFORD SOUND TO TE ANAU

DRIVING DISTANCE: 116km / 72 miles
TRAVEL TIMES: By road - approximately 1 hour 41 minutes (by road)

Te Anau

A city/town in the Fiordland Region

Perched on the edge of New Zealand's second largest lake, the township of Te Anau is the main visitor base for Fiordland National Park. At the Department of Conservation Visitor Centre you can make plans to walk the Milford, Routeburn or Kepler Tracks. There are many places to stay, but you'd be wise to book ahead in the busy season. Restaurants are plentiful. Apart from hiking, popular local activities include lake cruising, kayaking and exploring the Te Ana-au Glowworm caves. The museum has a collection relevant to both the Maori and European history of the area. There's also a wildlife park specialising in native birds.

Functional facts: Approx. population 4000, i-SITE Visitor Centre, good range of shops and services.

I-SITES IN TE ANAU

FIORDLAND I-SITE VISITOR CENTRE

Some of the most wild and dramatic scenery in NZ can be found in Fiordland, the sightseeing - walking capital of the world.

Address: Lakefront Drive, Te Anau
Phone: +64 +64 3 2498900
Fax: +64 +64 3 2497022
Email: fiordland@i-SITE.org

FIORDLAND'S MARINE RESERVES

Scenic Highlights > National Parks & Marine Reserves in Te Anau, Fiordland Region

In parts of Fiordland National Park, natural environments are protected from the peaks of mountains to the depths of the fiords.

Contact: Department of Conservation
Phone: +64 3 2497921
Fax: +64 3 2497613
Email: fiordlandvc@doc.govt.nz
Website: www.doc.govt.nz/templates/podcover.aspx?id=33897

[View Full Details](#)



Fiordland i-SITE Visitor Centre

DAY 21 ACCOMMODATION

TE ANAU TOP 10 HOLIDAY PARK

Accommodation > Holiday Parks *in Te Anau, Fiordland Region*



We are a two-time New Zealand Tourism Award Winner for Best Holiday Park in New Zealand. We offer five star rated accommodation; from basic cabins, campervan and tent sites to cabins with private bathrooms and new tourist flats & motels.

We have a great location on the lakefront within easy walking distance to the retail area. Facilities include; infants cots, toilets, showers, communal kitchen with fridge/freezer, laundry, linen hire, children's playground, free gas barbecues, picnic tables, sun umbrellas, mountain bikes hire, off-street parking and campervan dump station.

Reception and information office on site.

Member Top 10 Holiday Parks & HAPNZ. Hosts Bryan & Georgia.

Price range: \$NZ 18 - 170

★★★★★
Qualmark Rating

Address: 128 Te Anau Terrace, Te Anau

Phone: +64 +64 3 2497462

Fax: +64 +64 3 2497262

Email: fivestar@teanautop10.co.nz

Website: www.teanautop10.co.nz

[View Full Details](#)

MOSSBURN COUNTRY PARK

Accommodation > Holiday Parks *in Te Anau, Fiordland Region*



Mossburn Country Park offers holiday park accommodation along with a farm stay like experience. We are set in 28 acres of rural Southland and are surrounded by snow capped hills and mountains. Guests have a choice of cabins, backpackers, campervan powered sites and tent camping sites.

We are situated on the main route between Te Anau and Queenstown. Milford Sound, Manapouri and Doubtful Sound are also within comfortable driving distance. We are only 2 km from the famous trout fishing offered by the Oreti River,

while multiple opportunities for hunting and tramping are also on our doorstep.

For further information please visit our website.

Price range: \$NZ 14 - 50

Address: 333 Mossburn Five Rivers Rd, Mossburn

Phone: +64 +64 3 2486444

Email: info@mossburncountrypark.co.nz

Website: www.mossburncountrypark.co.nz

[View Full Details](#)

Day 22 - 23 November 2010

TRAVELLING FROM TE ANAU TO WANAKA

DRIVING DISTANCE: 230km / 143 miles

TRAVEL TIMES: By road - approximately 3 hours 20 minutes (by road)

Wanaka

A city/town *in the* Lake Wanaka Region

The lakeside town of Wanaka can provide you with an appealing mix of fine living, family fun and adventure. It has a high concentration of cafes, restaurants and interesting shops. It's obvious that the Wanaka district is nicely obsessed with aviation. At the airport you can arrange to go flightseeing or sky diving, and every two years the town hosts a spectacular airshow revolving around classic military aircraft. Winter is a busy time in Wanaka, as the town fills up with snow sports fans. Local snow venues include Treble Cone, Cardrona and Waiorau. Wanaka is also a handy base if you want to hike or climb in Mount Aspiring National Park. Functional facts: Approx. population 3500, i-SITE Visitor Centre, wide range of accommodation.

I-SITES IN WANAKA

LAKE WANAKA I-SITE VISITOR CENTRE

Booking agent for activities, transport and accommodation in Wanaka and throughout New Zealand. Selection of souvenirs.

Address: The Log Cabin, Lakefront, 100 Ardmore Street, Wanaka

Phone: +64 +64 3 4431233

Fax: +64 +64 3 4431290

Email: lakewanaka@i-SITE.org

Website: www.lakewanaka.co.nz

LAKES WANAKA AND HAWEA

Scenic Highlights > Lakes *in* Wanaka, Lake Wanaka Region



Framed by mountains, these glacier-carved lakes can be enjoyed from the water or by hiking shoreline tracks.

Contact: Lake Wanaka i-SITE Visitor Centre

Phone: +64 +64 3 4431233

Fax: +64 +64 3 4431290

Email: lakewanaka@i-SITE.org

Website: www.lakewanaka.co.nz

[View Full Details](#)

Lake Wanaka i-SITE Visitor Centre

TRAVELLING FROM WANAKA TO MT COOK VILLAGE

DRIVING DISTANCE: 206km / 128 miles

TRAVEL TIMES: By road - approximately 3 hours (by road)

Mt Cook Village

A city/town *in the* Christchurch - Canterbury Region

The village of Mount Cook is a comfortable haven in one of the most unforgiving parts of New Zealand. On every side, the Southern Alps scrape the sky. Even in summer, the weather can change in the blink of an eye. The region is only 44 kilometres from the coast, so storms can arrive suddenly from the Tasman Sea to create dangerous conditions for climbers. However you don't have to be a mountaineer to interact with the stunning scenery; there are various alpine walks beginning near the village, all about three hours return. Flightseeing, tours to the Tasman Glacier and heli-skiing (in winter) are other ways to optimise your time here.

Functional facts: Approx. population 250, Department of Conservation Visitor Centre, limited shopping.

AORAKI/MOUNT COOK NATIONAL PARK

Scenic Highlights > National Parks & Marine Reserves *in* Mt Cook Village, Christchurch - Canterbury Region

Aoraki/Mount Cook, New Zealand's tallest peak, is the centre of attention in this spectacular alpine park.

Contact: DOC Aoraki/Mt Cook Visitor Centre

Phone: +64 +64 3 4351186



Email: mtcookvc@doc.govt.nz

Website: www.doc.govt.nz/templates/PlaceProfile.aspx?id=38406

[View Full Details](#)

Methven i-SITE Visitor Centre

DAY 22 ACCOMMODATION

GLENTANNER PARK (MOUNT COOK) LTD

Accommodation > Holiday Parks *in* Mt Cook Village, Christchurch - Canterbury Region



Sited on the shores of Lake Pukaki, and only 15 minutes from Mt Cook Village, Glentanner Park offers superb views of the mountain and excellent access to the National Park.

We have a wide range of budget style, self catering accommodation options;

Self Contained Cabins – Own kitchen and bathroom. Full linen. Sleeps 1-5 persons.

Basic & Standard Cabins –bunkroom style, shared kitchen & bathroom facilities. Sleeps 1-5 persons.

Camping Site – power point sites and tent sites

Backpackers dormitory – bunk beds, own bedding, shared facilities & kitchen

On-site restaurant and cafeteria for a light snack or a substantial meal. The restaurant is open for breakfast and lunch all year round with evening dining during summer.

Price range: \$NZ 16 - 125



Qualmark Rating

Address: State Highway 80, Aoraki Mount Cook

Phone: +64 +64 3 4351855

Fax: +64 +64 300 4351854

Email: info@glentanner.co.nz

Website: www.glentanner.co.nz

[View Full Details](#)

Day 23 - 24 November 2010

TRAVELLING FROM MT COOK VILLAGE TO DUNEDIN

DRIVING DISTANCE: 327km / 203 miles

TRAVEL TIMES: By road - approximately 4 hours 44 minutes (by road)

By Air - approximately 30 minutes (by air) + 3 hours 47 minutes (by road)

Dunedin

A city/town *in the* Dunedin - Coastal Otago Region

The city of Dunedin was built with the riches of the gold rush, consequently it has one of the best collections of Edwardian and Victorian architecture in the southern hemisphere. Gothic church spires, ornate mansions, swathes of native forest and magnificent views of the harbour make Dunedin very memorable. Around the city you can visit historic homes, dip into the chocolate factory and browse the excellent museums. Take a drive along Otago Peninsula to discover Larnach Castle and a choice of wildlife encounters – there are penguin, albatross and seal colonies here. The resident student population keeps Dunedin lively.

Functional facts: Approx. population 107,000, i-SITE Visitor Centre, domestic and international airport.

I-SITES IN DUNEDIN

DUNEDIN I-SITE VISITOR CENTRE

Dunedin's official information Centre. We have a complete database of accommodation, tour and transport operators. Friendly help with any enquiry.

Address: 20 Princes Street, Dunedin Central, Dunedin

Phone: +64 +64 3 4743300

Fax: +64 +64 3 4743311

Email: dunedin@i-SITE.org

Website: www.dunedin.govt.nz/visitor-centre

OTAGO PENINSULA

Scenic Highlights > Coastal Highlights *in* Dunedin, Dunedin - Coastal Otago Region



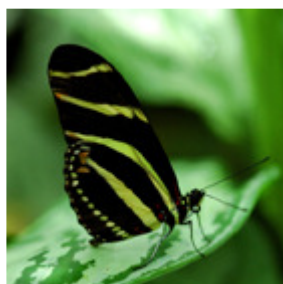
Put a day aside to explore Otago Peninsula, where eco-experiences range from penguin and fur seal colonies to the toe-tingling cliffs of The Chasm and Lovers Leap.

Contact: Dunedin i-SITE Visitor Centre
Phone: +64 +64 3 4743300
Fax: +64 +64 3 4743311
Email: dunedin@i-SITE.org
Website: www.dunedin.govt.nz/visitor-centre

[View Full Details](#)
 Dunedin i-SITE Visitor Centre

OTAGO MUSEUM

Activity > Arts, Culture and Heritage > Museums *in* Dunedin, Dunedin - Coastal Otago Region



Otago Museum is one of New Zealand's oldest and largest Museums covering the themes of culture, nature and science. Whether you have an hour to spare or a day to enjoy, you'll find something to inspire, enlighten or excite you.

With a large variety of themed galleries, including Southern Land, Southern People and Discovery World, there's something here for everyone! Great shop and cafe. Open 10am - 5pm daily.

For more information about our exhibits, displays and tours please visit our website. We can also organise guided tours and facility hire.

Qualmark Endorsed
 Visitor Activity
Address: 419 Great King Street, Dunedin
Phone: +64 +64 3 4747474
Email: mail@otagomuseum.govt.nz
Website: www.otagomuseum.govt.nz

[View Full Details](#)

ELM WILDLIFE TOURS

Activity > Wildlife Encounters > Penguins *in* Dunedin, Dunedin - Coastal Otago Region



New Zealand's best wildlife tour (NZ Tourism awards), is located in Dunedin the wildlife capital of New Zealand. We offer exceptional, natural, afternoon/evening wildlife experiences on the Otago peninsula. Numerous spectacular areas are visited during tours, the most stunning being our conservation area where excellent close-up viewing of Penguins, Sea lions and Fur seals is presented. Viewing in this area is absolutely unrivalled. Royal Albatross are seen at Taiaroa head and other birdlife is viewed around the bays and lagoons. We are Green Globe 21 benchmarked to the highest international standard and divert a

large proportion of turnover to conservation.

Qualmark Endorsed
 Visitor Activity
Address: 19 Irvine road, Otago Peninsula, Dunedin
Phone: +64 +64 3 4544121
Fax: +64 +64 3 4544523
Email: tours@elmwildlifetours.co.nz
Website: www.elmwildlifetours.co.nz

[View Full Details](#)

DAY 23 ACCOMMODATION

AARON LODGE TOP 10 HOLIDAY PARK

Accommodation > Holiday Parks *in* Dunedin, Dunedin - Coastal Otago Region

We are a Top 10 Holiday Park in Central Dunedin with a variety of accommodation to suit every need from tent sites, powered sites, to cabins, self contained units and motels, studio and two bedroom units.

We also have a heated covered swimming pool and spa. Games tables and BBQ tables are available. There's also a petanque court and mini 'park' golf course.

Price range: \$NZ 40 - 170

★★★★★
 Qualmark Rating

Address: 162 Kaikorai Valley Road, Kaikorai Valley, Dunedin
Phone: +64 +64 3 476 4725
Fax: +64 +64 3 476 7925



Email: stay@aaronlodge.co.nz
Website: www.aaronlodgetop10.co.nz

[View Full Details](#)

THE OROKONUI ECOSANCTUARY

Activity > Wildlife Encounters > Other Wildlife in Dunedin, Dunedin - Coastal Otago Region



Our 307 hectare Ecosanctuary is the only area of native forest in mainland South Island where indigenous plants and animals can live in the wild without threat from most introduced pests. It is home to some of New Zealand's most fascinating and rare forest wildlife.

Visit us and explore the Ecosanctuary's protected habitat where you will experience a natural encounter with South Island forest wildlife in a regenerating forest ecosystem. By visiting you will be supporting the preservation of biodiversity today and contributing towards a better tomorrow

for our natural heritage.

Guided tours and unguided walking. Open daily from 9.30am - 4.30pm. Less than 20 minutes from downtown Dunedin City.

Address: Blueskin Road, Dunedin
Phone: +64 +64 3 482 1755
Email: info@orokonui.org.nz
Website: www.orokonui.org.nz

[View Full Details](#)

ROYAL ALBATROSS CENTRE

Activity > Wildlife Encounters > Bird Watching in Dunedin, Dunedin - Coastal Otago Region



The Royal Albatross Centre at Taiaroa Head is the only mainland breeding ground of albatross in the world! It is just a 50 minute drive from the Dunedin City Centre.

Experience the exhilaration of having a huge Northern Royal Albatross with a three-metre wingspan glide effortlessly and silently near you.

A guided tour with one of our experienced guides offers viewing of these magnificent birds. The world class visitors centre welcomes you year round and offers superb educational displays on the albatross & many of the other species present

at Taiaroa Head (NZ fur seals, blue penguins, spotted shags, royal spoon bills to name a few).

A true eco-tourism experience!

A gift shop and Cafe compliment this unique experience.

Qualmark Endorsed
 Visitor Activity

Address: Taiaroa Head, Otago Peninsula, Dunedin
Phone: +64 +64 3 4780499
Fax: +64 +64 3 4780575
Email: reservations@albatross.org.nz
Website: www.albatross.org.nz

[View Full Details](#)

ELM WILDLIFE TOURS

Activity > Wildlife Encounters > Penguins in Dunedin, Dunedin - Coastal Otago Region

New Zealand's best wildlife tour (NZ Tourism awards), is located in Dunedin the wildlife capital of New Zealand. We offer exceptional, natural, afternoon/evening wildlife experiences on the Otago peninsula. Numerous spectacular area's are visited during tours, the most stunning being our conservation area where excellent close-up viewing of Penguins, Sea lions and Fur seals is presented. Viewing in this area is absolutely unrivalled. Royal Albatross are seen at Taiaroa head and other birdlife is viewed around the bays and lagoons. We are Green Globe 21 benchmarked to the highest international standard and divert a large proportion of turnover to conservation.

Qualmark Endorsed
 Visitor Activity

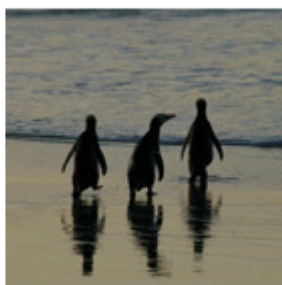
Address: 19 Irvine road, Otago Peninsula, Dunedin
Phone: +64 +64 3 4544121
Fax: +64 +64 3 4544523
Email: tours@elmwildlifetours.co.nz
Website: www.elmwildlifetours.co.nz

[View Full Details](#)



NATURE GUIDES OTAGO

Activity > Wildlife Encounters > Penguins *in* Dunedin, Dunedin - Coastal Otago Region



This is a unique opportunity to observe rare yellow-eyed penguins on their daily journey to the sea.

As a guest in their natural habitat - you will learn about their behaviour, breeding cycle, & ongoing conservation challenges. A reasonable level of fitness is required as this tour involves a forty-minute walk and a climb up a steep sand dune.

The Sunrise Penguin Walk is part of the two night package for guests staying at Nisbet Cottage, which also includes exploration of remote Otago Peninsula, bird observations and albatross viewing. Pending on availability, clients from other

accommodations are welcome to join.

Our guides are knowledgeable and enthusiastic and look forward to sharing this special wildlife adventure with you.

Qualmark Endorsed
Visitor Activity

Address: 6a Elliffe Place, Shiel Hill, Dunedin

Phone: +64 +64 3 4545169

Fax: +64 +64 3 4545369

Email: info@natureguidesotago.co.nz

Website: www.natureguidesotago.co.nz

[View Full Details](#)

ELM WILDLIFE TOURS

Activity > Wildlife Encounters > Bird Watching *in* Dunedin, Dunedin - Coastal Otago Region



New Zealand's best wildlife tour (NZ Tourism awards), is located in Dunedin the wildlife capital of New Zealand. We offer exceptional, natural, afternoon/evening wildlife experiences on the Otago peninsula. Numerous spectacular areas are visited during tours, the most stunning being our conservation area where excellent close-up viewing of Penguins, Sea lions and Fur seals is presented. Viewing in this area is absolutely unrivalled. Royal Albatross are seen at Taiaeroa head and other birdlife is viewed around the bays and lagoons. We are Green Globe 21 benchmarked to the highest international standard and divert a

large proportion of turnover to conservation.

Qualmark Endorsed
Visitor Activity

Address: 19 Irvine road, Otago Peninsula, Dunedin

Phone: +64 +64 3 4544121

Fax: +64 +64 3 4544523

Email: tours@elmwildlifetours.co.nz

Website: www.elmwildlifetours.co.nz

[View Full Details](#)

Day 24 - *25 November 2010*

TRAVELLING FROM DUNEDIN TO OAMARU

DRIVING DISTANCE: 115km / 71 miles

TRAVEL TIMES: By road - approximately 1 hour 40 minutes (by road)

Oamaru

A city/town *in* the Dunedin - Coastal Otago Region

The whitestone townscape of Oamaru contains some of the best-preserved heritage buildings in New Zealand. In the late 19th century, the town prospered through

goldmining, quarrying and timber milling. Some of the wealth was spent on elegant stone buildings made from local limestone. The Harbour-Tyne Street area is particularly special – and the shopping is great too. Oamaru Harbour is home to a colony of little blue penguins. You can also see yellow-eyed penguins from a special hide. Penguin viewing is best just before sunset. The public gardens in Oamaru are widely acclaimed. They include a Victorian summerhouse and an oriental garden. Functional facts: Approx. population 12,000, i-SITE Visitor Centre, good range of shops and services.

I-SITES IN OAMARU

OAMARU I-SITE VISITOR CENTRE

Information, itinerary planning and reservation service. Advice on what to do and see while in Oamaru and the Waitaki District.

Address: 1 Thames Street, Oamaru
Phone: +64 +64 3 4341656
Fax: +64 +64 3 4341657
Email: isite@visitoamaru.co.nz
Website: www.visitoamaru.co.nz

MOERAKI BOULDERS

Scenic Highlights > Natural Phenomena *in* Oamaru, Dunedin - Coastal Otago Region



You simply can't drive along the North Otago coast without stopping to stare at the Moeraki Boulders - they're amazing!

[View Full Details](#)

[i-SITE Visitor Centres in](#)

TRAVELLING FROM OAMARU TO LAKE TEKAPO

DRIVING DISTANCE: 184km / 114 miles

TRAVEL TIMES: By road - approximately 2 hours 39 minutes (by road)

Lake Tekapo

A city/town *in the* Christchurch - Canterbury Region

Lake Tekapo and the other lakes in the Mackenzie Country are a wonderful opaque turquoise colour, the result of glacier-ground rock sediment in the water. The township at the lake's edge knows how to look after visitors; it has a choice of cafes and several souvenir shops. The exquisite Church of the Good Shepherd is possibly the most photographed church in New Zealand - its altar window perfectly frames Mount Cook. Another photographic opportunity is the sheepdog memorial, which pays tribute to the role of dogs in high country farming. Make the most of the fresh, alpine air on the Lake Tekapo Walkway. On a clear night, you can watch the stars at Mt John Observatory.

Functional facts: Approx. population 300, food store, fuel.

I-SITES IN LAKE TEKAPO

LAKE TEKAPO I-SITE

Lake Tekapo i-SITE for information and help with bookings. Information on "What to See and Do" while you are in our beautiful region.

Address: State Hiway 8, Lake Tekapo
Phone: +64 +64 3 680 6579
Fax: +64 +64 3 680 6589
Email: laketekapo@mtcook.org.nz

TRAVELLING FROM LAKE TEKAPO TO OMARAMA

DRIVING DISTANCE: 86km / 53 miles

TRAVEL TIMES: By road - approximately 1 hour 15 minutes (by road)

Omarama

A city/town *in the* Christchurch - Canterbury Region

Glider pilots love the air above Omarama, a small township near the southern end of the Mackenzie Basin. World and national gliding records are regularly broken here, as pilots make the most of the clear, empty skies and accommodating updrafts. Nearby attractions include the Clay Cliffs, Lake Ohau Forest, Benmore Power Station and Aoraki/Mount Cook National Park, which is about an hour's drive away. Omarama activities include gliding with experienced local pilots, golf, horse riding and fly fishing. You'll know you've arrived when you see the large merino sheep statue. Functional facts: Approx. population 360, good range of accommodation, basic shops and services.

DAY 24 ACCOMMODATION

OMARAMA TOP 10 HOLIDAY PARK

Accommodation > Holiday Parks *in* Omarama, Christchurch - Canterbury Region



A Top 10, owner/operator 4 stars Qualmark rated Holiday Park. A ten acre, tree sheltered site, bounded by the Omarama stream, with a lot of facilities: playground, BBQ, TV room and internet kiosk. We offer units, cabins, power sites and tent sites. Wireless internet available.

Two minutes walk to restaurants and shops. Activities include trout fishing, golf, gliding, boating, tramping, mountain biking and 4 wheel drive.

Central for day tripping to Mt Cook, Lake Tekapo, Ohau and Bemore, also Wanaka and Queenstown.

Price range: \$NZ 15 - 125



Qualmark Rating

Address: 1 Omarama Avenue, Corner SH 8 & 83, Omarama

Phone: +64 +64 3 4389875

Fax: +64 +64 3 4389680

Email: omarama.holiday@xtra.co.nz

Website: www.omaramatop10.co.nz

[View Full Details](#)

Day 25 - 26 November 2010

TRAVELLING FROM OMARAMA TO ASHBURTON

DRIVING DISTANCE: 225km / 140 miles

TRAVEL TIMES: By road - approximately 3 hours 16 minutes (by road)

Ashburton

A city/town *in the* Christchurch - Canterbury Region

A major service centre for the local farming district, Ashburton sits between the Rakaia and Rangitata Rivers. When European settlers first arrived here, the area was a dry, tussock-covered expanse with hardly any trees. Extensive irrigation schemes have transformed the land, and the story of Ashburton's triumph over drought is told at the town's main museum (there are six museums in Ashburton, including a vintage railway museum, aviation museum and car museum). Local art and craft galleries provide interesting shopping. Both of the nearby rivers are known for salmon and sea-run trout.

Functional facts: Approx. population 16,000, full range of shops and services, i-SITE Visitor Centre.

I-SITES IN ASHBURTON

ASHBURTON I-SITE VISITOR INFORMATION CENTRE

Ashburton – gateway to some of the South Island's best activities & attractions, including Hot Air Ballooning over the Canterbury Plains, fly fishing, jet boat the Rakaia River and skiing Mt Hutt.

Address: East Street, Ashburton

Phone: +64 +64 3 3081050

Fax: +64 +64 3 3081064

Email: ashburton@i-SITE.org

Website: www.ashburtondistrict.co.nz

CANTERBURY PLAINS

Scenic Highlights > Scenic Views *in* Ashburton, Christchurch - Canterbury Region

Like a patchwork quilt made with every shade of green, the Canterbury Plains lie serenely between the mountains and the sea.

Contact: Christchurch Airport i-SITE Visitor Centre



Phone: +64 +64 3 3537774
Fax: +64 +64 3 3537754
Email: christchurchairport@i-SITE.org

[View Full Details](#)
 Christchurch Airport i-SITE Visitor Centre

TRAVELLING FROM ASHBURTON TO CHRISTCHURCH

DRIVING DISTANCE: 91km / 57 miles
TRAVEL TIMES: By road - approximately 1 hour 20 minutes (by road)

Christchurch

A city/town in the Christchurch - Canterbury Region

The South Island's largest city, Christchurch is an entertaining mixture of refined lifestyle and cultural excitement. The tranquil Avon River meanders through the city, historic buildings house a lively arts community and restored trams make it easy for visitors to get around. The first four ships arrived from England to settle Christchurch in 1850, and their legacy lives on in the city's grand heritage buildings and stately parks. Visit historic sites, museums and art galleries, and enjoy the highly developed restaurant scene. For an unforgettable scenic experience, travel up the Christchurch gondola or go punting on the Avon River.

Functional facts: Approx. population 317,000, international airport, three i-SITE visitor centres.

I-SITES IN CHRISTCHURCH

CHRISTCHURCH AIRPORT I-SITE VISITOR CENTRE

Free itinerary planning and reservations service available 365 days a year for Christchurch, Canterbury and the rest of New Zealand.

Address: Domestic Terminal, Christchurch Airport, Christchurch
Phone: +64 +64 3 3537774
Fax: +64 +64 3 3537754
Email: christchurchairport@i-SITE.org

CHRISTCHURCH I-SITE VISITOR CENTRE

A National Visitor Information Centre - free advice and reservation service for all the unique attractions and activities in Christchurch, Canterbury and other regions.

Address: Old Chief Post Office, Cathedral Square West, Christchurch
Phone: +64 +64 3 3799629
Fax: +64 +64 3 3772424
Email: info@christchurchnz.com
Website: www.christchurchnz.com

Disclaimer

WEB SITE CONTENT DISCLAIMER

All information contained in this Web Site has been provided by sources other than the New Zealand Tourism Board, trading as Tourism New Zealand (TNZ).

TNZ has not separately verified any of the information contained on this Web Site.

No representation, warranty or undertaking, express or implied, is made and no responsibility is accepted by TNZ as to the accuracy or completeness of the information contained in this Web Site nor that this information is not misleading in any respect.

TNZ does not accept any liability of any sort in relation to the information contained in this Web Site.

TNZ advises all users of this Web Site to make their own inquiries before relying on any information in this Web Site.

TNZ provides this Web Site for informational purposes only. TNZ does not endorse any of the persons or entities listed or linked to the Web Site or make any representations or warranties as to their reliability, financial condition, or suitability for any particular purpose. You are advised to make your own inquiries of any person or entity on or linked to this Web Site to determine if he/she/it is satisfactory for your purposes.